

EpCAM Antibody [Clone VU-1D9]

Purified Mouse Monoclonal Antibody

Catalog # AH10359

Product Information

Application	FC
Primary Accession	P16422
Reactivity	Human
Host	Mouse
Clonality	Monoclonal
Isotype	IgG1, kappa
Clone Names	VU-1D9
Calculated MW	34932

Additional Information

Gene ID	4072
Other Names	Epithelial cell adhesion molecule, Ep-CAM, Adenocarcinoma-associated antigen, Cell surface glycoprotein Trop-1, Epithelial cell surface antigen, Epithelial glycoprotein, EGP, Epithelial glycoprotein 314, EGP314, hEGP314, KS 1/4 antigen, KSA, Major gastrointestinal tumor-associated protein GA733-2, T
Target/Specificity	Small cell lung carcinoma cells
Application Note	ELISA : For coating, order Ab without BSA===Flow Cytometry : 0.5-1ug/million cells===Immunofluorescence : 1-2ug/ml===Western Blotting : 0.5-1.0 μ g/ml=== Immunoprecipitation : 1-2ug/500ug protein lysate===Immunohistology (Frozen & Formalin-fixed) : 0.5-1.0 μ g/ml for 30 minutes at RT===(Staining of formalin-fixed tissues requires boiling tissue sections in 10mM citrate buffer, pH 6.0, for 10-20 min followed by cooling at RT for 20 minutes).
Format	0.5 ml at 40ug/ml; conjugated to PE
Storage	Store at 2 to 8°C.Antibody is stable for 24 months.
Precautions	EpCAM Antibody [Clone VU-1D9] is for research use only and not for use in diagnostic or therapeutic procedures.

Protein Information

Name	EPCAM
Synonyms	GA733-2, M1S2, M4S1, MIC18, TACSTD1, TRO

Function	May act as a physical homophilic interaction molecule between intestinal epithelial cells (IECs) and intraepithelial lymphocytes (IELs) at the mucosal epithelium for providing immunological barrier as a first line of defense against mucosal infection. Plays a role in embryonic stem cells proliferation and differentiation. Up-regulates the expression of FABP5, MYC and cyclins A and E.
Cellular Location	Lateral cell membrane; Single-pass type I membrane protein. Cell junction, tight junction. Note=Colocalizes with CLDN7 at the lateral cell membrane and tight junction
Tissue Location	Highly and selectively expressed by undifferentiated rather than differentiated embryonic stem cells (ESC) Levels rapidly diminish as soon as ESC's differentiate (at protein levels). Expressed in almost all epithelial cell membranes but not on mesodermal or neural cell membranes. Found on the surface of adenocarcinoma.

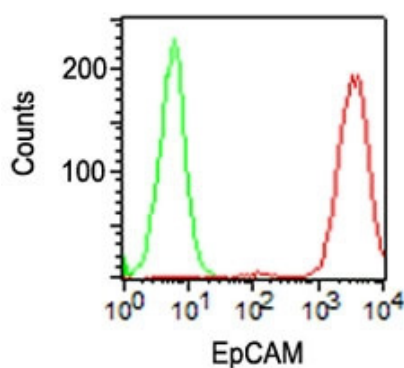
Background

EGP40 is a 40-43kDa transmembrane epithelial glycoprotein, also identified as epithelial specific antigen (ESA), or epithelial cellular adhesion molecule (Ep-CAM). It is expressed on baso-lateral cell surface in most simple epithelia and a vast majority of carcinomas. This antibody has been used to distinguish adenocarcinoma from pleural mesothelioma and hepatocellular carcinoma. This antibody is also useful in distinguishing serous carcinomas of the ovary from mesothelioma.

References

1. Litvinov SV et. al. J Cell Biol, 1994, 125:437-46.
2. Tsubura A et. al. J Cut Pathol, 1992, 19:73-9.

Images



Surface staining of HT29 cells using Ep-CAM Ab (VU-1D9) (red) and isotype control Ab (green).

Please note: All products are 'FOR RESEARCH USE ONLY. NOT FOR USE IN DIAGNOSTIC OR THERAPEUTIC PROCEDURES'.