

Ep-CAM / CD326 (Epithelial Marker) Mouse Monoclonal Antibody [Clone EGP40/837]

Purified Mouse Monoclonal Antibody
Catalog # AH10372

Product Information

Application	IF, FC
Primary Accession	P16422
Reactivity	Human
Host	Mouse
Clonality	Monoclonal
Isotype	IgG1, kappa
Clone Names	EGP40/837
Calculated MW	34932

Additional Information

Gene ID	4072
Other Names	Adenocarcinoma-associated Antigen; Cell Surface Glycoprotein Trop-1; EGP2; EGP314; EGP40; Epithelial Cell Adhesion Molecule; Epithelial Glycoprotein 314; ESA; KSA; TACD1; TACSTD1; TROP1; Tumor-associated Calcium Signal Transducer 1, ECS-1, Epidermal Surface Antigen 1, ESA1, FLOT2, Flotillin-2, M17S1 (Membrane Component, Chromosome 17, Surface Marker-1), REG-1, Reggie-1, Reggie-2
Target/Specificity	Recombinant full-length human TACSTD1 protein
Application Note	Flow Cytometry (0.5-1ug/million cells); Immunofluorescence (0.5-1ug/ml for 30 min at RT) (Staining of formalin-fixed tissues is enhanced by boiling tissue sections in 10mM Citrate Buffer, pH 6.0, for 10-20 min followed by cooling at RT for 20 minutes) Optimal dilution for a specific application should be determined.
Format	0.5ml at 100ug/ml with BSA and azide
Storage	Store at 2 to 8°C. Antibody is stable for 24 months.
Precautions	Ep-CAM / CD326 (Epithelial Marker) Mouse Monoclonal Antibody [Clone EGP40/837] is for research use only and not for use in diagnostic or therapeutic procedures.

Protein Information

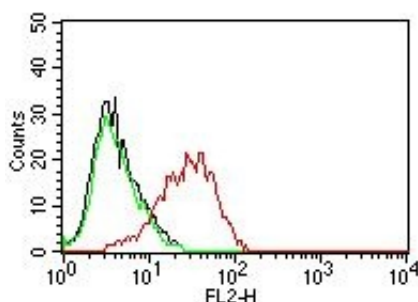
Name	EPCAM
-------------	-------

Synonyms	GA733-2, M1S2, M4S1, MIC18, TACSTD1, TRO
Function	May act as a physical homophilic interaction molecule between intestinal epithelial cells (IECs) and intraepithelial lymphocytes (IELs) at the mucosal epithelium for providing immunological barrier as a first line of defense against mucosal infection. Plays a role in embryonic stem cells proliferation and differentiation. Up-regulates the expression of FABP5, MYC and cyclins A and E.
Cellular Location	Lateral cell membrane; Single-pass type I membrane protein. Cell junction, tight junction. Note=Colocalizes with CLDN7 at the lateral cell membrane and tight junction
Tissue Location	Highly and selectively expressed by undifferentiated rather than differentiated embryonic stem cells (ESC) Levels rapidly diminish as soon as ESC's differentiate (at protein levels). Expressed in almost all epithelial cell membranes but not on mesodermal or neural cell membranes. Found on the surface of adenocarcinoma.

References

Bjork, P., Jonsson, U., Svedberg, H., Larsson, K., Lind, P., Dillner, J., Hedlund, G., Dohlsten, M. and Kalland, T. 1993. Isolation, partial characterization, and molecular cloning of a human colon adenocarcinoma cell-surface glyco- protein recognized by the C215 mouse monoclonal antibody. J. Biol. Chem. 268: 24232-24241.

Images



Flow Cytometric analysis of human Ep-CAM on MCF-7 Cells. Black: Cells alone; Green: Isotype Control; Red: PE-labeled Ep-CAM MAb (EGP40/837).

Please note: All products are 'FOR RESEARCH USE ONLY. NOT FOR USE IN DIAGNOSTIC OR THERAPEUTIC PROCEDURES'.