

# Cytokeratin, pan (Epithelial Marker) Mouse Monoclonal Antibody [Clone AE-1/AE-3]

Purified Mouse Monoclonal Antibody

Catalog # AH10374

## Product Information

---

<b>Application</b>	IF, FC
<b>Primary Accession</b>	<a href="#">Q7Z794</a>
<b>Other Accession</b>	<a href="#">Q01546</a>
<b>Reactivity</b>	Human, Mouse, Rat, Rabbit, Monkey, Chicken, Dog, Bovine
<b>Host</b>	Mouse
<b>Clonality</b>	Monoclonal
<b>Isotype</b>	IgG1, kappa + IgG1, kappa
<b>Clone Names</b>	AE-1/AE-3
<b>Calculated MW</b>	61901

## Additional Information

---

<b>Gene ID</b>	374454
<b>Other Names</b>	K1B; KRT1B; Keratin, type II cytoskeletal 1b; K77; CK-1B; Keratin 1B; Keratin-77; Cytokeratin-1B; Type-II Keratin Kb39
<b>Target/Specificity</b>	Human epidermal keratin
<b>Application Note</b>	Flow Cytometry (0.5-1ug/million cells); Immunofluorescence (1-2ug/ml for 30 min at RT) (Staining of formalin-fixed tissues requires boiling tissue sections in 10mM citrate buffer, pH 6.0, for 10-20 min followed by cooling at RT for 20 minutes)Optimal dilution for a specific application should be determined.
<b>Format</b>	0.5ml at 100ug/ml with BSA and azide
<b>Storage</b>	Store at 2 to 8°C.Antibody is stable for 24 months.
<b>Precautions</b>	Cytokeratin, pan (Epithelial Marker) Mouse Monoclonal Antibody [Clone AE-1/AE-3] is for research use only and not for use in diagnostic or therapeutic procedures.

## Protein Information

---

<b>Name</b>	KRT77
<b>Synonyms</b>	KRT1B
<b>Tissue Location</b>	Expressed exclusively in skin.

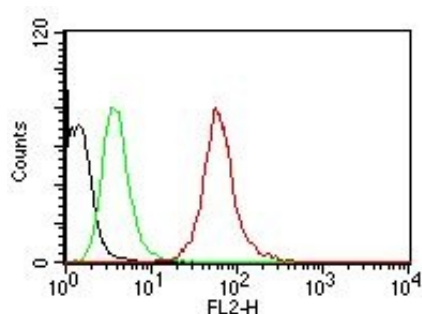
## References

---

1. Woodcock-Mitchell J et. al. Journal of Cell Biology 1982;95:580-8.
2. Tseng SCG et. al. Cell 1982; 30361.

## Images

---



Flow Cytometric analysis of human Pan-Cytokeratins on HeLa Cells. Black: Cells alone; Green: Isotype Control; Red: PE-labeled Pan-Cytokeratin MAb (AE-1/AE-3).

Please note: All products are 'FOR RESEARCH USE ONLY. NOT FOR USE IN DIAGNOSTIC OR THERAPEUTIC PROCEDURES'.