

HCG-alpha (Pregnancy & Choriocarcinoma Marker) Antibody - With BSA and Azide

Mouse Monoclonal Antibody [Clone SPM552]
Catalog # AH10391

Product Information

Application	IHC-P
Primary Accession	P01215
Other Accession	1081 , 119689
Reactivity	Human
Host	Mouse
Clonality	Monoclonal
Isotype	Mouse / IgG1, kappa
Clone Names	SPM552
Calculated MW	13075

Additional Information

Gene ID	1081
Other Names	Glycoprotein hormones alpha chain, Anterior pituitary glycoprotein hormones common subunit alpha, Choriogonadotropin alpha chain, Chorionic gonadotrophin subunit alpha, CG-alpha, Follicle-stimulating hormone alpha chain, FSH-alpha, Follicle-stimulating hormone alpha chain, Luteinizing hormone alpha chain, LSH-alpha, Lutropin alpha chain, Thyroid-stimulating hormone alpha chain, TSH-alpha, Thyrotropin alpha chain, CGA
Application Note	IHC-P~~N/A
Format	200ug/ml of Ab purified from Bioreactor Concentrate by Protein A/G. Prepared in 10mM PBS with 0.05% BSA & 0.05% azide. Also available WITHOUT BSA & azide at 1.0mg/ml.
Storage	Store at 2 to 8°C. Antibody is stable for 24 months.
Precautions	HCG-alpha (Pregnancy & Choriocarcinoma Marker) Antibody - With BSA and Azide is for research use only and not for use in diagnostic or therapeutic procedures.

Protein Information

Name	CGA
Function	Shared alpha chain of the active heterodimeric glycoprotein hormones thyrotropin/thyroid stimulating hormone/TSH, lutropin/luteinizing hormone/LH, follitropin/follicle stimulating hormone/FSH and

choriogonadotropin/CG. These hormones bind specific receptors on target cells that in turn activate downstream signaling pathways.

Cellular Location

Secreted

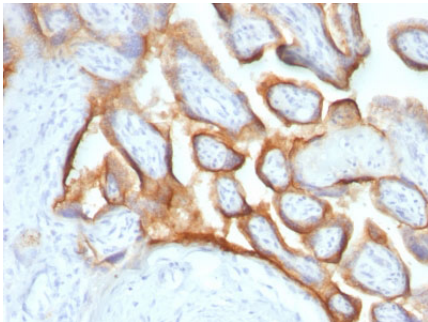
Background

This MAb reacts with a protein of ~13kDa, identified as α sub-unit of HCG. HCG is a glycoprotein, which is secreted in large quantities by normal trophoblasts. It is present only in trace amounts in non-pregnant urine and sera but rises sharply during pregnancy. HCG is composed of two non-identical, non-covalently linked polypeptide chains designated as the α and β subunits. The β subunit is identical to that of thyroid stimulating hormone (TSH), follicle stimulating hormone (FSH), and luteinizing hormone (LH).

References

McDonald EA et. al. Endocrinology 150:4358-65 (2009).

Images



Formalin-fixed, paraffin-embedded human Placenta stained with hCG alpha Monoclonal Antibody (SPM552).

Please note: All products are 'FOR RESEARCH USE ONLY. NOT FOR USE IN DIAGNOSTIC OR THERAPEUTIC PROCEDURES'.