

HCG-beta (Pregnancy & Choriocarcinoma Marker) Antibody - With BSA and Azide

Mouse Monoclonal Antibody [Clone SPM105]
Catalog # AH10394

Product Information

Application	IHC-P
Primary Accession	P01233
Other Accession	1082 , 172944
Reactivity	Human
Host	Mouse
Clonality	Monoclonal
Isotype	Mouse / IgG1, kappa
Clone Names	SPM105
Calculated MW	22 KDa

Additional Information

Other Names	Choriogonadotropin subunit beta, CG-beta, Chorionic gonadotrophin chain beta, CGB, CGB3
Application Note	IHC-P~~N/A
Format	200ug/ml of Ab purified from Bioreactor Concentrate by Protein A/G. Prepared in 10mM PBS with 0.05% BSA & 0.05% azide. Also available WITHOUT BSA & azide at 1.0mg/ml.
Storage	Store at 2 to 8°C. Antibody is stable for 24 months.
Precautions	HCG-beta (Pregnancy & Choriocarcinoma Marker) Antibody - With BSA and Azide is for research use only and not for use in diagnostic or therapeutic procedures.

Protein Information

Background

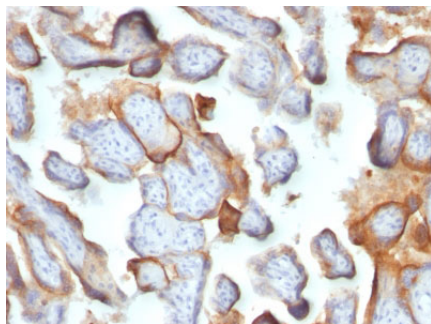
This MAb reacts with a protein of 22kDa, identified as β sub-unit of HCG. It does not cross react with the α sub-unit. HCG is a glycoprotein, which is secreted in large quantities by normal trophoblasts. It is present only in trace amounts in non-pregnant urine and sera but rises sharply during pregnancy. HCG is composed of two non-identical, non-covalently linked polypeptide chains designated as the α and β subunits. The β subunit is identical to that of thyroid stimulating hormone (TSH), follicle stimulating hormone (FSH), and luteinizing hormone (LH). hCG MAb detects cells and tumors of trophoblastic origin such as choriocarcinoma. Large cell carcinoma and adenocarcinoma of the lung demonstrate anti-hCG positivity in

90% and 60% of cases respectively. 20% of lung squamous cell carcinomas are positive. hCG expression by non-trophoblastic tumors may indicate aggressive behavior.

References

Cocquebert M et. al. Am J Physiol Endocrinol Metab. 2012;303(8):E950-8

Images



Formalin-fixed, paraffin-embedded human Placenta stained with hCG beta Monoclonal Antibody (SPM105).

Please note: All products are 'FOR RESEARCH USE ONLY. NOT FOR USE IN DIAGNOSTIC OR THERAPEUTIC PROCEDURES'.