

Fibronectin Antibody - With BSA and Azide

Mouse Monoclonal Antibody [Clone SPM539]

Catalog # AH10465

Product Information

Application	IF, FC, IHC-P
Primary Accession	P02751
Other Accession	2335 , 203717
Reactivity	Human
Host	Mouse
Clonality	Monoclonal
Isotype	Mouse / IgG1, kappa
Clone Names	SPM539
Calculated MW	272320

Additional Information

Gene ID	2335
Other Names	Fibronectin, FN, Cold-insoluble globulin, CIG, Anastellin, Ugl-Y1, Ugl-Y2, Ugl-Y3, FN1, FN
Application Note	IF~~1:50~200 FC~~1:10~50 IHC-P~~N/A
Format	200ug/ml of Ab purified from Bioreactor Concentrate by Protein A/G. Prepared in 10mM PBS with 0.05% BSA & 0.05% azide. Also available WITHOUT BSA & azide at 1.0mg/ml.
Storage	Store at 2 to 8°C. Antibody is stable for 24 months.
Precautions	Fibronectin Antibody - With BSA and Azide is for research use only and not for use in diagnostic or therapeutic procedures.

Protein Information

Name	FN1 (HGNC:3778)
Synonyms	FN
Function	Fibronectins bind cell surfaces and various compounds including collagen, fibrin, heparin, DNA, and actin (PubMed: 3024962 , PubMed: 3593230 , PubMed: 3900070 , PubMed: 7989369). Fibronectins are involved in cell adhesion, cell motility, opsonization, wound healing, and maintenance of cell shape (PubMed: 3024962 , PubMed: 3593230 , PubMed: 3900070 , PubMed: 7989369). Involved in osteoblast compaction through the fibronectin fibrillogenesis cell-mediated matrix assembly process, essential for osteoblast

mineralization (By similarity). Participates in the regulation of type I collagen deposition by osteoblasts (By similarity). Acts as a ligand for the LILRB4 receptor, inhibiting FCGR1A/CD64-mediated monocyte activation (PubMed:[34089617](#)).

Cellular Location

Secreted, extracellular space, extracellular matrix. Secreted {ECO:0000250|UniProtKB:P11276}

Tissue Location

Expressed in the inner limiting membrane and around blood vessels in the retina (at protein level) (PubMed:29777959) Plasma FN (soluble dimeric form) is secreted by hepatocytes. Cellular FN (dimeric or cross-linked multimeric forms), made by fibroblasts, epithelial and other cell types, is deposited as fibrils in the extracellular matrix. Ugl-Y1, Ugl-Y2 and Ugl-Y3 are found in urine (PubMed:17614963).

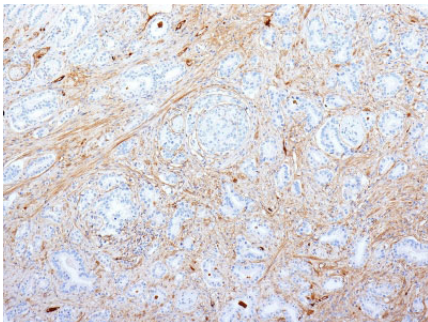
Background

Fibronectin is a dimeric glycoprotein of 440kDa, which is present in cells, extracellular matrix, and blood. It possesses at least four binding sites for collagen, glycosaminoglycans, transglutaminase, and a cell surface receptor. Fibronectin is involved in cell adhesion, tissue organization, and wound healing. This MAb is directed against the peptide core and reacts with both the plasma and cellular forms of fibronectin. It blocks the fibronectin-mediated cell attachment not by disrupting the collagen-fibronectin interaction, but by interfering with the attachment of fibronectin to its receptor on the cell surface.

References

Schoen RC, et. al. Hybridoma, 1982, 1(2):99-108

Images



Formalin-fixed, paraffin-embedded human Pancreatic Adenocarcinoma stained with Fibronectin Monoclonal Antibody (SPM539).

Please note: All products are 'FOR RESEARCH USE ONLY. NOT FOR USE IN DIAGNOSTIC OR THERAPEUTIC PROCEDURES'.