

# Prostate Specific Antigen (PSA) Antibody - With BSA and Azide

Mouse Monoclonal Antibody [Clone SPM352 ]  
Catalog # AH10527

## Product Information

---

<b>Application</b>	IF, FC, IHC-P
<b>Primary Accession</b>	<a href="#">P07288</a>
<b>Other Accession</b>	<a href="#">354</a> , <a href="#">171995</a>
<b>Reactivity</b>	Human
<b>Host</b>	Mouse
<b>Clonality</b>	Monoclonal
<b>Isotype</b>	Mouse / IgG1, kappa
<b>Clone Names</b>	SPM352
<b>Calculated MW</b>	28741

## Additional Information

---

<b>Gene ID</b>	354
<b>Other Names</b>	Prostate-specific antigen, PSA, 3.4.21.77, Gamma-seminoprotein, Semin, Kallikrein-3, P-30 antigen, Semenogelase, KLK3, APS
<b>Application Note</b>	IF~~1:50~200 FC~~1:10~50 IHC-P~~N/A
<b>Format</b>	200ug/ml of Ab purified from Bioreactor Concentrate by Protein A/G. Prepared in 10mM PBS with 0.05% BSA & 0.05% azide. Also available WITHOUT BSA & azide at 1.0mg/ml.
<b>Storage</b>	Store at 2 to 8°C.Antibody is stable for 24 months.
<b>Precautions</b>	Prostate Specific Antigen (PSA) Antibody - With BSA and Azide is for research use only and not for use in diagnostic or therapeutic procedures.

## Protein Information

---

<b>Name</b>	KLK3
<b>Synonyms</b>	APS
<b>Function</b>	Hydrolyzes semenogelin-1 thus leading to the liquefaction of the seminal coagulum.
<b>Cellular Location</b>	Secreted.

## Background

---

Recognizes a single protein of 33-34kDa, identified as the prostate specific antigen (PSA). This MAb is highly specific to PSA and stains prostatic secretory and ductal epithelium in both normal and neoplastic tissues. PSA is a chymotrypsin-like serine protease (kallikrein family) exclusively produced by the prostate epithelium, and abundant in seminal fluid. PSA can be detected in the sera of patients with prostatic carcinoma. It is predominantly complexed to a liver-derived serine protease inhibitor, alpha-1-antichymotrypsin (ACT). A higher proportion of serum PSA is complexed to ACT in prostate cancer than in benign prostate hyperplasia.

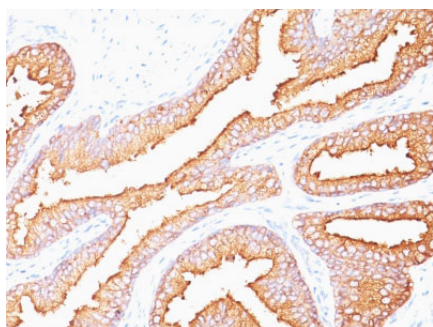
## References

---

ISOBM TD-3 Workshop, Tum. Biol. 20 (S1), pp 1-94, Eds. Rye P.D. et al. (1999)

## Images

---



Formalin-fixed, paraffin-embedded human Prostate Carcinoma stained with PSA Monoclonal Antibody (SPM352).

Please note: All products are 'FOR RESEARCH USE ONLY. NOT FOR USE IN DIAGNOSTIC OR THERAPEUTIC PROCEDURES'.