

# CD56 / NCAM1 (Neuronal Cell Marker) Antibody - With BSA and Azide

Mouse Monoclonal Antibody [Clone SPM128 ]  
Catalog # AH10627

## Product Information

---

Application	IF, FC, IHC-P
Primary Accession	<a href="#">P13591</a>
Other Accession	<a href="#">4684</a> , <a href="#">503878</a> , <a href="#">P13592</a>
Reactivity	Human, Rat, Zebrafish
Host	Mouse
Clonality	Monoclonal
Isotype	Mouse / IgG1, kappa
Clone Names	SPM128
Calculated MW	94574

## Additional Information

---

Gene ID	4684
Other Names	Neural cell adhesion molecule 1, N-CAM-1, NCAM-1, CD56, NCAM1, NCAM
Application Note	IF~~1:50~200 FC~~1:10~50 IHC-P~~N/A
Format	200ug/ml of Ab purified from Bioreactor Concentrate by Protein A/G. Prepared in 10mM PBS with 0.05% BSA & 0.05% azide. Also available WITHOUT BSA & azide at 1.0mg/ml.
Storage	Store at 2 to 8°C. Antibody is stable for 24 months.
Precautions	CD56 / NCAM1 (Neuronal Cell Marker) Antibody - With BSA and Azide is for research use only and not for use in diagnostic or therapeutic procedures.

## Protein Information

---

Name	NCAM1 ( <a href="#">HGNC:7656</a> )
Synonyms	NCAM
Function	This protein is a cell adhesion molecule involved in neuron- neuron adhesion, neurite fasciculation, outgrowth of neurites, etc. (Microbial infection) Acts as a receptor for Zika virus.
Cellular Location	[Isoform 1]: Cell membrane; Single-pass type I membrane protein [Isoform 3]: Cell membrane; Lipid-anchor, GPI- anchor [Isoform 5]: Secreted.

## Background

---

This MAb reacts with an extracellular domain (close to transmembrane) of CD56/NCAM. Three isoforms of neural cell adhesion molecule (NCAM) are produced by differential splicing of the RNA transcript from a single gene. The 135kDa isoform is the basic molecule, which is glycosylated or sialylated to produce the mature species. Anti-CD56 recognizes two proteins of the neural cell adhesion molecule, the basic molecule expressed on most neuroectodermally derived tissues and neoplasms (e.g. retinoblastoma, medulloblastomas, astrocytomas, neuroblastomas, and small cell carcinomas). It is also expressed on some mesodermally derived tumors (rhabdomyosarcoma). Anti-CD56 plays an important role in the diagnosis of nodal and nasal NK/T-cell lymphomas.

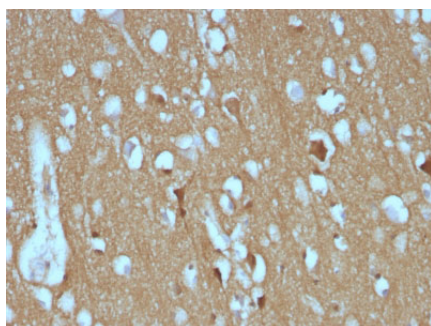
## References

---

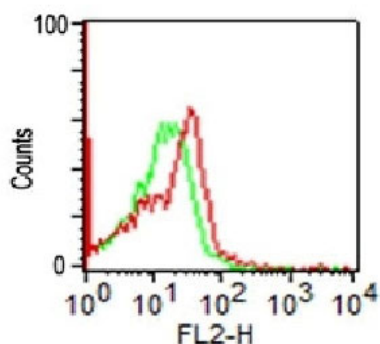
Hilkens et al., Int J Cancer. 1984 34:197-206. | Kibbelaar et al. Eur. J. Cancer 1991 27:431-435

## Images

---



Formalin-fixed, paraffin-embedded human Cerebellum stained with CD56 Monoclonal Antibody (SPM128)



FACS analysis of CD56 on human Monocytes using CD56 Monoclonal Antibody (SPM128)

Please note: All products are 'FOR RESEARCH USE ONLY. NOT FOR USE IN DIAGNOSTIC OR THERAPEUTIC PROCEDURES'.