

# Actin, Smooth Muscle (Leiomyosarcoma Marker) Antibody - With BSA and Azide

Mouse Monoclonal Antibody [Clone SPM332 ]  
Catalog # AH10708

## Product Information

---

<b>Application</b>	IF, FC, IHC-P
<b>Primary Accession</b>	<a href="#">P62736</a>
<b>Other Accession</b>	<a href="#">59</a> , <a href="#">500483</a>
<b>Reactivity</b>	Human, Mouse, Rat, Rabbit, Monkey, Pig, Chicken, Goat, Bovine, Baboon, Sheep, Cat, Guinea Pig, Dog
<b>Host</b>	Mouse
<b>Clonality</b>	Monoclonal
<b>Isotype</b>	Mouse / IgG2a, kappa
<b>Clone Names</b>	SPM332
<b>Calculated MW</b>	42009

## Additional Information

---

<b>Gene ID</b>	59
<b>Other Names</b>	Actin, aortic smooth muscle, Alpha-actin-2, Cell growth-inhibiting gene 46 protein, ACTA2, ACTSA, ACTVS
<b>Application Note</b>	IF~~1:50~200 FC~~1:10~50 IHC-P~~N/A
<b>Format</b>	200ug/ml of Ab purified from Bioreactor Concentrate by Protein A/G. Prepared in 10mM PBS with 0.05% BSA & 0.05% azide. Also available WITHOUT BSA & azide at 1.0mg/ml.
<b>Storage</b>	Store at 2 to 8°C. Antibody is stable for 24 months.
<b>Precautions</b>	Actin, Smooth Muscle (Leiomyosarcoma Marker) Antibody - With BSA and Azide is for research use only and not for use in diagnostic or therapeutic procedures.

## Protein Information

---

<b>Name</b>	ACTA2
<b>Synonyms</b>	ACTSA, ACTVS
<b>Function</b>	Actins are highly conserved proteins that are involved in various types of cell motility and are ubiquitously expressed in all eukaryotic cells.
<b>Cellular Location</b>	Cytoplasm, cytoskeleton.

## Background

---

Actin is a major component of the cytoskeleton and is present in most cell types. This MAb is highly specific to actin from smooth muscles. Its epitope lies in the first four N-terminal amino acids. This MAb does not stain cardiac or skeletal muscle; however, it does stain myofibroblasts and myoepithelial cells. This antibody could be used together with anti-muscle specific actin and myogenin in making a diagnosis of smooth muscle and skeletal muscle tumors. In most cases of rhabdomyosarcoma, this antibody yields negative results whereas anti-muscle specific actin and myogenin are positive. Leiomyosarcomas are positive only with anti-muscle specific actin and anti-smooth muscle actin and are negative with anti-myogenin.

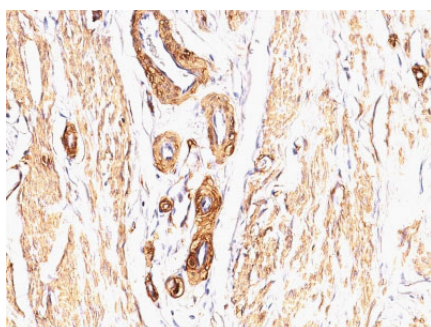
## References

---

Skalli O et. al. Journal of Cell Biology, 1986, 103:2787-96

## Images

---



Formalin-fixed, paraffin-embedded Leiomyosarcoma stained with Smooth Muscle Actin Monoclonal Antibody (SPM332).

Please note: All products are 'FOR RESEARCH USE ONLY. NOT FOR USE IN DIAGNOSTIC OR THERAPEUTIC PROCEDURES'.