

Vimentin (Mesenchymal Cell Marker) Antibody - With BSA and Azide

Mouse Monoclonal Antibody [Clone SPM576]
Catalog # AH10809

Product Information

Application	WB, IF, FC, IHC-P
Primary Accession	P08670
Other Accession	7431 , 455493
Reactivity	Human, Pig, Chicken, Goat, Bovine, Cat, Dog
Host	Mouse
Clonality	Monoclonal
Isotype	Mouse / IgG1
Clone Names	SPM576
Calculated MW	53652

Additional Information

Gene ID	7431
Other Names	Vimentin, VIM
Application Note	WB~~1:1000 IF~~1:50~200 FC~~1:10~50 IHC-P~~N/A
Format	200ug/ml of Ab purified from Bioreactor Concentrate by Protein A/G. Prepared in 10mM PBS with 0.05% BSA & 0.05% azide. Also available WITHOUT BSA & azide at 1.0mg/ml.
Storage	Store at 2 to 8°C. Antibody is stable for 24 months.
Precautions	Vimentin (Mesenchymal Cell Marker) Antibody - With BSA and Azide is for research use only and not for use in diagnostic or therapeutic procedures.

Protein Information

Name	VIM (HGNC:12692)
Function	Vimentins are class-III intermediate filaments found in various non-epithelial cells, especially mesenchymal cells. Vimentin is attached to the nucleus, endoplasmic reticulum, and mitochondria, either laterally or terminally. Plays a role in cell directional movement, orientation, cell sheet organization and Golgi complex polarization at the cell migration front (By similarity). Protects SCRIB from proteasomal degradation and facilitates its localization to intermediate filaments in a cell contact-mediated manner (By similarity). May promote axon outgrowth and motor fiber repair via DSP-mediated recruitment to outgrowth tips (By similarity).

Cellular Location	Cytoplasm. Cytoplasm, cytoskeleton. Nucleus matrix {ECO:0000250 UniProtKB:P31000}. Cell membrane {ECO:0000250 UniProtKB:P20152}. Cell projection, axon {ECO:0000250 UniProtKB:P20152}
Tissue Location	Highly expressed in fibroblasts, some expression in T- and B-lymphocytes, and little or no expression in Burkitt's lymphoma cell lines. Expressed in many hormone-independent mammary carcinoma cell lines.

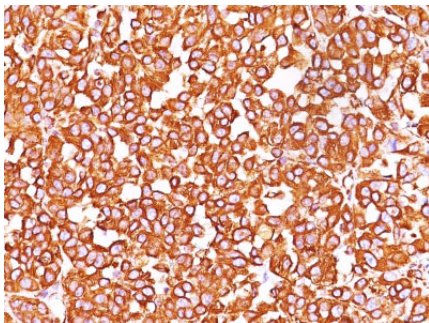
Background

This MAb reacts with a 58kDa protein identified as vimentin. It shows no cross-reaction with other closely related intermediate filament proteins (IFP's) such as desmin, keratin, neurofilament, and glial fibrillary acid protein. Anti-vimentin alone is of limited value as a diagnostic tool; however, when used in panels with other antibodies, it is useful for the sub-classification of a given tumor. Expression of vimentin, when used in conjunction with anti-keratin, is helpful when distinguishing melanomas from undifferentiated carcinomas and large cell lymphomas. All melanomas and Schwannomas react strongly with anti-vimentin. It labels a variety of mesenchymal cells, including melanocytes, lymphocytes, endothelial cells, and fibroblasts. Non-reactivity of anti-vimentin is often considered more useful than its positive reactivity, since there are a few tumors that do not contain vimentin, e.g. hepatoma and seminoma. Anti-vimentin is also useful as a tissue process control reagent.

References

Osborn M et. al. European Journal of Cell Biology. 1984; 34:137-143

Images



Formalin-fixed, paraffin-embedded human Melanoma stained with Vimentin Monoclonal Antibody (SPM576).

Please note: All products are 'FOR RESEARCH USE ONLY. NOT FOR USE IN DIAGNOSTIC OR THERAPEUTIC PROCEDURES'.