

# Phosphotyrosine (P-Tyr) Antibody - With BSA and Azide

Mouse Monoclonal Antibody [Clone SPM102 ]

Catalog # AH10927

## Product Information

---

<b>Application</b>	WB, IF, FC, IP, IHC-P
<b>Host</b>	Mouse
<b>Clonality</b>	Monoclonal
<b>Isotype</b>	Mouse / IgG2b
<b>Clone Names</b>	SPM102
<b>Calculated MW</b>	Depends upon the phosphorylated target

## Additional Information

---

<b>Application Note</b>	WB~~1:1000 IF~~1:50~200 FC~~1:10~50 IP~~N/A IHC-P~~N/A
<b>Format</b>	200ug/ml of Ab purified from Bioreactor Concentrate by Protein A/G. Prepared in 10mM PBS with 0.05% BSA & 0.05% azide. Also available WITHOUT BSA & azide at 1.0mg/ml.
<b>Storage</b>	Store at 2 to 8°C. Antibody is stable for 24 months.
<b>Precautions</b>	Phosphotyrosine (P-Tyr) Antibody - With BSA and Azide is for research use only and not for use in diagnostic or therapeutic procedures.

## Background

---

Protein phosphorylation is a fundamental event in the regulation of a large number of intracellular processes. Phosphorylation of specific tyrosine residues is the result of activation or stimulation of their respective protein tyrosine kinases. The phosphorylated proteins can be auto-phosphorylated kinases or certain cellular protein substrates. Tyrosine-phosphorylated proteins are involved in signal transduction and in the regulation of cell proliferation. Antibody to phosphotyrosine provides an excellent tool for the detection, characterization, and purification of phosphotyrosine containing proteins. This MAb shows no cross-reaction with other phosphoamino acids and is superb for multiple applications including staining of formalin/paraffin tissues.

## References

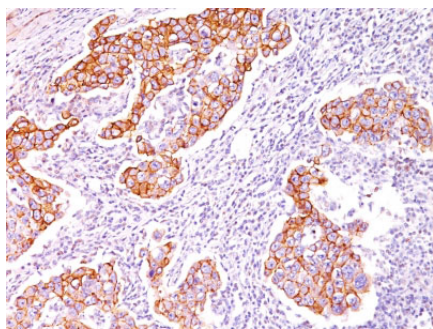
---

Glenny, Jr. JR, et. al. Journal of Immunological Methods, 1988, 109:277-85

## Images

---

Formalin-fixed, paraffin-embedded human Breast  
Carcinoma stained with Phosphotyrosine Monoclonal



Antibody (SPM102).

Please note: All products are 'FOR RESEARCH USE ONLY. NOT FOR USE IN DIAGNOSTIC OR THERAPEUTIC PROCEDURES'.