

# Cytokeratin, Multi (Epithelial Marker) Antibody - With BSA and Azide

Mouse Monoclonal Antibody [Clone SPM583 ]  
Catalog # AH10929

## Product Information

---

<b>Application</b>	WB, IF, FC, IHC-P
<b>Primary Accession</b>	<a href="#">P19013</a>
<b>Other Accession</b>	<a href="#">3851 (CK4)</a> , <a href="#">3852 (CK5)</a> , <a href="#">3853 (CK6A)</a> , <a href="#">3854 (CK6B)</a> , <a href="#">286887 (CK6C)</a> , <a href="#">3856 (CK8)</a> , <a href="#">3858 (CK10)</a> , <a href="#">3860 (CK13)</a> , <a href="#">3875 (CK18)</a> , <a href="#">P13647</a> , <a href="#">P02538</a> , <a href="#">P04259</a> , <a href="#">P48668</a> , <a href="#">P05787</a> , <a href="#">P13645</a> , <a href="#">P13646</a> , <a href="#">P05783</a>
<b>Reactivity</b>	Human, Mouse, Rat, Pig, Goat, Bovine, Marmoset, Guinea Pig
<b>Host</b>	Mouse
<b>Clonality</b>	Monoclonal
<b>Isotype</b>	Mouse / IgG1
<b>Clone Names</b>	SPM583
<b>Calculated MW</b>	56144

## Additional Information

---

<b>Gene ID</b>	3851
<b>Other Names</b>	Keratin, type II cytoskeletal 4, Cytokeratin-4, CK-4, Keratin-4, K4, Type-II keratin Kb4, KRT4, CYK4
<b>Application Note</b>	WB~~1:1000 IF~~1:50~200 FC~~1:10~50 IHC-P~~N/A
<b>Format</b>	200ug/ml of Ab purified from Bioreactor Concentrate by Protein A/G. Prepared in 10mM PBS with 0.05% BSA & 0.05% azide. Also available WITHOUT BSA & azide at 1.0mg/ml.
<b>Storage</b>	Store at 2 to 8°C.Antibody is stable for 24 months.
<b>Precautions</b>	Cytokeratin, Multi (Epithelial Marker) Antibody - With BSA and Azide is for research use only and not for use in diagnostic or therapeutic procedures.

## Protein Information

---

<b>Name</b>	KRT4
<b>Synonyms</b>	CYK4
<b>Tissue Location</b>	Detected in the suprabasal layer of the stratified epithelium of the esophagus, exocervix, vagina, mouth and lingual mucosa, and in cells and cell clusters in the mucosa and serous gland ducts of the esophageal submucosa (at protein level). Expressed widely in the exocervix and esophageal epithelium, with

lowest levels detected in the basal cell layer.

## Background

---

This MAb recognizes cytokeratin 4, 5, 6, 8, 10, 13, and 18. This is a broad-spectrum antibody which has been reported to differentiate epithelial tumors from non-epithelial tumors. Many studies have shown the usefulness of keratins as markers in cancer research and tumor diagnosis.

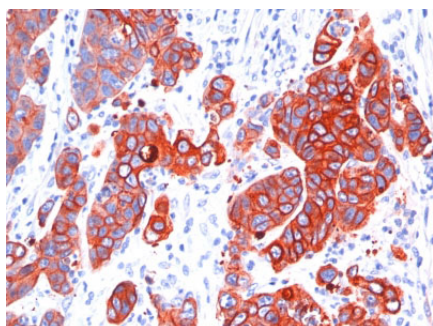
## References

---

Bartek J et. al. J Pathol, 1991, 164(3):215-24. ,2. Lane EB; Alexander CM. Seminars in Cancer Biology, 1990, 1:165-79. ,3. Bartkova J; et al. Neoplasma, 1991, 38:439-46.,4. Kasper M. Histochemistry, 1991, 95(6):613-20

## Images

---



Formalin-fixed, paraffin-embedded human Colon Carcinoma stained with Multi Cytokeratin Monoclonal Antibody (SPM583).

Please note: All products are 'FOR RESEARCH USE ONLY. NOT FOR USE IN DIAGNOSTIC OR THERAPEUTIC PROCEDURES'.