

Actin, Muscle Specific (Muscle Cell Marker) Antibody - With BSA and Azide

Mouse Monoclonal Antibody [Clone SPM160]
Catalog # AH10933

Product Information

Application	IF, FC, IHC-P
Primary Accession	P62736
Other Accession	58 , 59 , 70 , 118127 , 1288 , 500483 , P68032 , P68133
Reactivity	Human, Rat, Rabbit
Host	Mouse
Clonality	Monoclonal
Isotype	Mouse / IgG1, kappa
Clone Names	SPM160
Calculated MW	42009

Additional Information

Gene ID	59
Other Names	Actin, aortic smooth muscle, Alpha-actin-2, Cell growth-inhibiting gene 46 protein, ACTA2, ACTSA, ACTVS
Application Note	IF~~1:50~200 FC~~1:10~50 IHC-P~~N/A
Format	200ug/ml of Ab purified from Bioreactor Concentrate by Protein A/G. Prepared in 10mM PBS with 0.05% BSA & 0.05% azide. Also available WITHOUT BSA & azide at 1.0mg/ml.
Storage	Store at 2 to 8°C. Antibody is stable for 24 months.
Precautions	Actin, Muscle Specific (Muscle Cell Marker) Antibody - With BSA and Azide is for research use only and not for use in diagnostic or therapeutic procedures.

Protein Information

Name	ACTA2
Synonyms	ACTSA, ACTVS
Function	Actins are highly conserved proteins that are involved in various types of cell motility and are ubiquitously expressed in all eukaryotic cells.
Cellular Location	Cytoplasm, cytoskeleton.

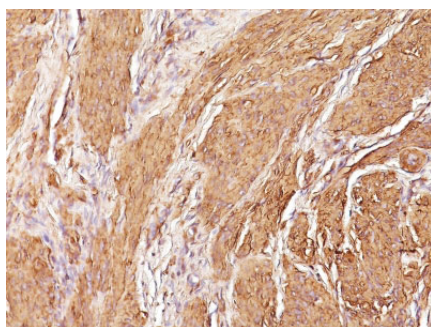
Background

This antibody recognizes actin of skeletal, cardiac, and smooth muscle cells. It is not reactive with other mesenchymal cells except for myoepithelium. Actin can be resolved on the basis of its isoelectric points into three distinctive components: alpha, beta, and gamma in order of increasing isoelectric point. Anti-muscle specific actin recognizes alpha and gamma isotype of all muscle groups. Non-muscle cells such as vascular endothelial cells and connective tissues are non-reactive. Also, neoplastic cells of non-muscle-derived tissue such as carcinomas, melanomas, and lymphomas are negative. It stains tumors of smooth muscle (leiomyomas and leiomyosarcomas) as well as skeletal muscle (rhabdomyomas and rhabdomyosarcomas).

References

Tsukada T. et. al. Am J Pathol 1987, 126:51. | Tsukada T. et. al. Am J Pathol 1987, 127:389

Images



Formalin-fixed, paraffin-embedded human
Leiomyosarcoma stained with Muscle Specific Actin
Monoclonal Antibody (SPM160)

Please note: All products are 'FOR RESEARCH USE ONLY. NOT FOR USE IN DIAGNOSTIC OR THERAPEUTIC PROCEDURES'.