

Ep-CAM / CD326 (Rat) (Epithelial Marker) Antibody - Bioreactor Concentrate

Mouse Monoclonal Antibody [Clone SPM534]
Catalog # AH10971

Product Information

Application	WB, IF, FC, IHC-P
Primary Accession	O55159
Other Accession	171577 (Rat)
Reactivity	Rat
Host	Mouse
Clonality	Monoclonal
Isotype	Mouse / IgG1
Clone Names	SPM534
Calculated MW	35207

Additional Information

Gene ID	171577
Other Names	Epithelial cell adhesion molecule, Ep-CAM, Epithelial glycoprotein 314, EGP314, Protein D5.7A, Tumor-associated calcium signal transducer 1, CD326, Epcam, Tacstd1
Application Note	WB~~1:1000 IF~~1:50~200 FC~~1:10~50 IHC-P~~N/A
Format	Bioreactor Concentrate with 0.05% Azide. Contact us if you require it in a different format.
Storage	Store at 2 to 8°C.Antibody is stable for 24 months.
Precautions	Ep-CAM / CD326 (Rat) (Epithelial Marker) Antibody - Bioreactor Concentrate is for research use only and not for use in diagnostic or therapeutic procedures.

Protein Information

Name	Epcam
Synonyms	Tacstd1
Function	May act as a physical homophilic interaction molecule between intestinal epithelial cells (IECs) and intraepithelial lymphocytes (IELs) at the mucosal epithelium for providing immunological barrier as a first line of defense against mucosal infection. Plays a role in embryonic stem cells proliferation and differentiation. Up-regulates the expression of FABP5, MYC and cyclins A

and E (By similarity).

Cellular Location

Lateral cell membrane; Single-pass type I membrane protein. Cell junction, tight junction. Note=Colocalizes with CLDN7 at the lateral cell membrane and tight junction

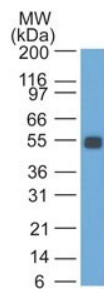
Background

Epitope of GZ-1 and GZ-20 monoclonal antibodies are different. EGP40 is a 40-43kDa transmembrane epithelial glycoprotein, also identified as epithelial specific antigen (ESA), or epithelial cellular adhesion molecule (Ep-CAM). It is expressed on baso-lateral cell surface in most simple epithelia and a vast majority of carcinomas.

References

Litvinov SV et. al. J Cell Biol, 1994, 125:437-46. ,2. Tsubura A et. al. J Cut Pathol, 1992, 19:73-9

Images



Western Blot of rat Colon Lysate probed with Ep-CAM Monoclonal Antibody (SPM534).

Please note: All products are 'FOR RESEARCH USE ONLY. NOT FOR USE IN DIAGNOSTIC OR THERAPEUTIC PROCEDURES'.