

Ksp-Cadherin (Kidney-Specific Cadherin) / CDH16 Antibody - With BSA and Azide

Mouse Monoclonal Antibody [Clone CDH16/1071]

Catalog # AH10983

Product Information

Application	IHC, IF, FC
Primary Accession	O75309
Other Accession	1014 , 513660
Reactivity	Human, Mouse, Rat, Rabbit, Dog
Host	Mouse
Clonality	Monoclonal
Isotype	Mouse / IgG1, kappa
Clone Names	CDH16/1071
Calculated MW	89923

Additional Information

Gene ID	1014
Other Names	Cadherin-16, Kidney-specific cadherin, Ksp-cadherin, CDH16
Application Note	IHC~~1:100~500 IF~~1:50~200 FC~~1:10~50
Storage	Store at 2 to 8°C.Antibody is stable for 24 months.
Precautions	Ksp-Cadherin (Kidney-Specific Cadherin) / CDH16 Antibody - With BSA and Azide is for research use only and not for use in diagnostic or therapeutic procedures.

Protein Information

Name	CDH16
Function	Cadherins are calcium-dependent cell adhesion proteins. They preferentially interact with themselves in a homophilic manner in connecting cells; cadherins may thus contribute to the sorting of heterogeneous cell types.
Cellular Location	Cell membrane; Single-pass type I membrane protein
Tissue Location	Kidney specific.

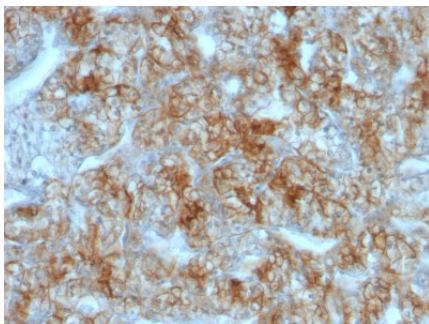
Background

This MAb recognizes a protein of 130kDa, identified as Ksp-cadherin. Cadherins form a superfamily of related glycoproteins that mediate calcium-dependent cell adhesion and transmit signals from the extracellular matrix to the cytoplasm. Cadherins have been implicated in embryogenesis, tissue morphogenesis, tissue structure maintenance, cell polarization, neoplastic invasiveness and metastasis, and membrane transport. It is suggested that Ksp-cadherin is a marker for terminal differentiation of the basolateral membranes of renal tubular epithelial cells. Within the kidney, Ksp-Cadherin is found exclusively in the basolateral membrane of renal tubular epithelial cells and collecting duct cells, and not in glomeruli, renal interstitial cells, or blood vessels. □Ksp-Cadherin has been suggested to distinguish Chromophobe Renal-Cell Carcinoma from Oncocytoma.

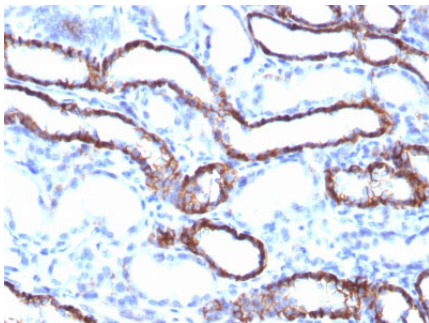
References

Shen, S.S., et al. 2005. Kidney-specific cadherin, a specific marker for the distal portion of the nephron and related renal neoplasms. *Mod Pathol.* 18: 933-40. | Mazal, P.R., et al. 2005. Expression of kidney-specific cadherin distinguishes chromophobe renal cell carcinoma from renal oncocytoma. *Hum Pathol.* 36: 22-28. |

Images



Formalin-fixed, paraffin-embedded human Renal Cell Carcinoma stained with KSP-Cadherin Monoclonal Antibody (CDH16/1071)



Formalin-fixed, paraffin-embedded Rat Kidney stained with KSP-Cadherin Monoclonal Antibody (CDH16/1071)

Please note: All products are 'FOR RESEARCH USE ONLY. NOT FOR USE IN DIAGNOSTIC OR THERAPEUTIC PROCEDURES'.