

# CELA3B / ELA3B (Pancreatic Function Marker) Antibody - With BSA and Azide

Mouse Monoclonal Antibody [Clone CELA3B/1218 ]

Catalog # AH11228

## Product Information

---

Application	IF, FC
Primary Accession	<a href="#">P08861</a>
Other Accession	<a href="#">23436</a> , <a href="#">728752</a>
Reactivity	Human
Host	Mouse
Clonality	Monoclonal
Isotype	Mouse / IgG, kappa
Clone Names	CELA3B/1218
Calculated MW	29263

## Additional Information

---

Gene ID	23436
Other Names	Chymotrypsin-like elastase family member 3B, 3.4.21.70, Elastase IIIB, Elastase-3B, Protease E, CELA3B, ELA3B
Application Note	IF~~1:50~200 FC~~1:10~50
Storage	Store at 2 to 8°C.Antibody is stable for 24 months.
Precautions	CELA3B / ELA3B (Pancreatic Function Marker) Antibody - With BSA and Azide is for research use only and not for use in diagnostic or therapeutic procedures.

## Protein Information

---

Name	CELA3B
Synonyms	ELA3B
Function	Efficient protease with alanine specificity but only little elastolytic activity.
Tissue Location	Pancreas. Not detectable in keratinocytes.

## Background

---

This MAb recognizes a protein of ~17kDa, identified as CELA3B (Chymotrypsin like elastase family member

3B). Elastases form a subfamily of serine proteases that hydrolyze many proteins in addition to elastin. Humans have six elastase genes which encode the structurally similar proteins elastase 1, 2, 2A, 2B, 3A, and 3B. Unlike other elastases, elastase 3B has little elastolytic activity. Like most of the human elastases, elastase 3B is secreted from the pancreas as a zymogen and, like other serine proteases such as trypsin, chymotrypsin and kallikrein; it has a digestive function in the intestine. Elastase 3B preferentially cleaves proteins after alanine residues. Elastase 3B may also function in the intestinal transport and metabolism of cholesterol. Both elastase 3A and elastase 3B have been referred to as protease E and as elastase 1, and excretion of this protein in fecal material is frequently used as a measure of pancreatic function in clinical assays.

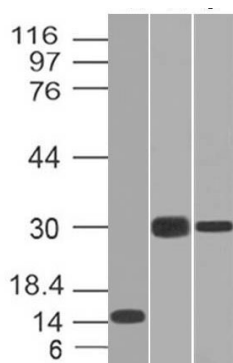
## References

---

Shirasu, Y., et al. 1988. Molecular cloning of complementary DNA encoding one of the human pancreatic protease E isozymes. *J. Biochem.* 104:259-264. | Tani, T., et al. 1988. Identification of a novel class of elastase isozyme, human pancreatic elastase III, by cDNA and genomic gene cloning. *J. Biol. Chem.* 263: 1231-1239. | Shimada, S., et al. 2002. Pancreatic elastase IIIA and its variants are expressed in pancreatic carcinoma cells. *Int. J. Mol. Med.* 10: 599-603

## Images

---



Western Blot of Recombinant, Panc-28 and PANC1 Cell Lysates using CELA3B Monoclonal Antibody (CELA3B/1218).

Please note: All products are 'FOR RESEARCH USE ONLY. NOT FOR USE IN DIAGNOSTIC OR THERAPEUTIC PROCEDURES'.