

CD15 / FUT4 (Reed-Sternberg Cell Marker) Antibody - With BSA and Azide

Mouse Monoclonal Antibody [Clone SPM490]
Catalog # AH11274

Product Information

Application	IF, FC
Primary Accession	P22083
Other Accession	2526 , 654379
Reactivity	Human
Host	Mouse
Clonality	Monoclonal
Isotype	Mouse / IgM, kappa
Clone Names	SPM490
Calculated MW	59084

Additional Information

Gene ID	2526
Other Names	Alpha-(1, 3)-fucosyltransferase 4, 2.4.1.-, ELAM-1 ligand fucosyltransferase, Fucosyltransferase 4, Fucosyltransferase IV, Fuc-TIV, FucT-IV, Galactoside 3-L-fucosyltransferase, FUT4, ELFT, FCT3A
Application Note	IF~~1:50~200 FC~~1:10~50
Storage	Store at 2 to 8°C.Antibody is stable for 24 months.
Precautions	CD15 / FUT4 (Reed-Sternberg Cell Marker) Antibody - With BSA and Azide is for research use only and not for use in diagnostic or therapeutic procedures.

Protein Information

Name	FUT4 {ECO:0000303 PubMed:29593094}
Function	[Isoform Short]: Catalyzes alpha(1->3) linkage of fucosyl moiety transferred from GDP-beta-L-fucose to N-acetyl glucosamine (GlcNAc) within type 2 lactosamine (LacNAc, Gal-beta(1->4)GlcNAc) glycan attached to N- or O-linked glycoproteins (PubMed: 1702034 , PubMed: 1716630 , PubMed: 29593094). Robustly fucosylates nonsialylated distal LacNAc unit of the polylactosamine chain to form Lewis X antigen (CD15), a glycan determinant known to mediate important cellular functions in development and immunity. Fucosylates with lower efficiency sialylated LacNAc acceptors to form sialyl Lewis X and 6- sulfo sialyl Lewis X determinants that serve as recognition epitopes for C-type lectins (PubMed: 1716630 , PubMed: 29593094). Together with FUT7 contributes to SELE, SELL and SELP selectin ligand biosynthesis and

selectin-dependent lymphocyte homing, leukocyte migration and blood leukocyte homeostasis (By similarity). In a cell type specific manner, may also fucosylate the internal LacNAc unit of the polylactosamine chain to form VIM-2 antigen that serves as recognition epitope for SELE (PubMed:[11278338](#), PubMed:[1716630](#)).

Cellular Location

Golgi apparatus, Golgi stack membrane; Single-pass type II membrane protein. Note=Membrane-bound form in trans cisternae of Golgi

Tissue Location

[Isoform Short]: Expressed at low levels in bone marrow-derived mesenchymal stem cells.

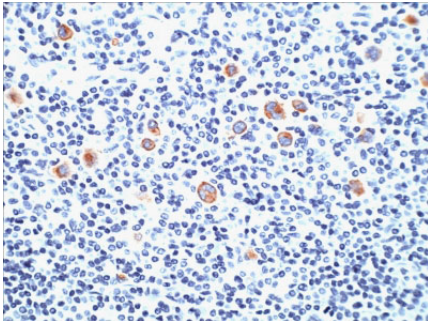
Background

CD15 plays a role in mediating phagocytosis, bactericidal activity, and chemotaxis. It is present on >95% of granulocytes including neutrophils and eosinophils and to a lesser degree on monocytes. In addition, CD15 is expressed in Reed-Sternberg cells and some epithelial cells. CD15 antibody is very useful in the identification of Hodgkin's disease. CD15 is occasionally expressed in large cell lymphomas of both B and T phenotypes which otherwise have a quite distinct histological appearance.

References

Bettelheim, P., et al., Cluster Report: CD15, in : Knapp, W., et al. (eds), Leucocyte Typing IV, Oxford Univ. Press, pp 798-799. | Hogg, N., et al., Myeloid antigens: new and previously defines clusters, in: McMichael, A.J., et al (eds), Leucocyte Typing III, Oxford Univ. Press, pp 576-602. |

Images



Formalin-fixed, paraffin-embedded human Hodgkin's Lymphoma stained with CD15 Monoclonal Antibody (SPM490)

Please note: All products are 'FOR RESEARCH USE ONLY. NOT FOR USE IN DIAGNOSTIC OR THERAPEUTIC PROCEDURES'.