

# CD57 / B3GAT1 (Natural Killer Cell Marker) Antibody - With BSA and Azide

Mouse Monoclonal Antibody [Clone NK-1 ]

Catalog # AH11302

## Product Information

---

Application	IHC, IF
Primary Accession	<a href="#">Q9P2W7</a>
Other Accession	<a href="#">27087</a> , <a href="#">381050</a>
Reactivity	Human
Host	Mouse
Clonality	Monoclonal
Isotype	Mouse / IgM, kappa
Clone Names	NK-1
Calculated MW	38256

## Additional Information

---

Gene ID	27087
Other Names	Galactosylgalactosylxylosylprotein 3-beta-glucuronosyltransferase 1, 2.4.1.135, Beta-1, 3-glucuronyltransferase 1, Glucuronosyltransferase P, GlcAT-P, UDP-GlcUA:glycoprotein beta-1, 3-glucuronyltransferase, GlcUAT-P, B3GAT1, GLCATP
Application Note	IHC~~1:100~500 IF~~1:50~200
Storage	Store at 2 to 8°C.Antibody is stable for 24 months.
Precautions	CD57 / B3GAT1 (Natural Killer Cell Marker) Antibody - With BSA and Azide is for research use only and not for use in diagnostic or therapeutic procedures.

## Protein Information

---

Name	B3GAT1 ( <a href="#">HGNC:921</a> )
Synonyms	GLCATP
Function	Involved in the biosynthesis of L2/HNK-1 carbohydrate epitope on glycoproteins. Can also play a role in glycosaminoglycan biosynthesis. Substrates include asialo-orosomucoid (ASOR), asialo- fetuin, and asialo-neural cell adhesion molecule. Requires sphingomyelin for activity: stearyl-sphingomyelin was the most effective, followed by palmitoyl-sphingomyelin and lignoceroyl- sphingomyelin. Activity was demonstrated only for sphingomyelin with a saturated fatty acid and not for that with an unsaturated fatty acid, regardless of the length of the acyl group.

<b>Cellular Location</b>	[Isoform 1]: Golgi apparatus membrane {ECO:0000250 UniProtKB:O35789}; Single-pass type II membrane protein {ECO:0000250 UniProtKB:O35789}. Secreted {ECO:0000250 UniProtKB:O35789}
<b>Tissue Location</b>	Mainly expressed in the brain.

## Background

---

Anti-CD57 marks a subset of lymphocytes known as natural killer (NK) cells. Follicular center cell lymphomas often contain many NK cells within the neoplastic follicles. Anti-CD57 also stains neuroendocrine cells and their derived tumors, including carcinoid tumor and medulloblastoma. Anti-CD57 can also be useful in separating type B3 thymoma from thymic carcinoma when combined with a panel that includes antibodies against GLUT1, CD5, and CEA.

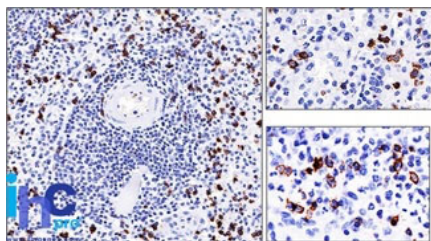
## References

---

Abo T et. al. J Immunol, 1982, 129(4):1758-61. | Abo T et al. J Immunology, 1982, 129:1752-7. | McGarry, RC et al. Nature 306:376 (1983). | Lanier, LL et al. J. Immunology 131:1789 (1983)

## Images

---



Formalin-fixed, paraffin-embedded human Spleen stained with CD57 Monoclonal Antibody (NK-1).

Please note: All products are 'FOR RESEARCH USE ONLY. NOT FOR USE IN DIAGNOSTIC OR THERAPEUTIC PROCEDURES'.