

Prostate Specific Antigen (PSA) Antibody - With BSA and Azide

Mouse Monoclonal Antibody [Clone KLK3/801 + KLK3/1248]
Catalog # AH11570

Product Information

Application	IF, FC, IHC-P
Primary Accession	P07288
Other Accession	354 , 171995
Reactivity	Human
Host	Mouse
Clonality	Monoclonal
Isotype	Mouse / IgG's
Clone Names	KLK3/801 + KLK3/1248
Calculated MW	28741

Additional Information

Gene ID	354
Other Names	Prostate-specific antigen, PSA, 3.4.21.77, Gamma-seminoprotein, Semin, Kallikrein-3, P-30 antigen, Semenogelase, KLK3, APS
Application Note	IF~~1:50~200 FC~~1:10~50 IHC-P~~N/A
Storage	Store at 2 to 8°C.Antibody is stable for 24 months.
Precautions	Prostate Specific Antigen (PSA) Antibody - With BSA and Azide is for research use only and not for use in diagnostic or therapeutic procedures.

Protein Information

Name	KLK3
Synonyms	APS
Function	Hydrolyzes semenogelin-1 thus leading to the liquefaction of the seminal coagulum.
Cellular Location	Secreted.

Background

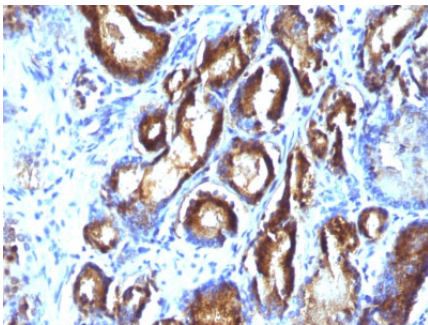
Recognizes a single protein of 33-34kDa, identified as the prostate specific antigen (PSA). This MAb is highly

specific to PSA and stains prostatic secretory and ductal epithelium in both normal and neoplastic tissues. PSA is a chymotrypsin-like serine protease (kallikrein family) exclusively produced by the prostate epithelium, and abundant in seminal fluid. PSA can be detected in the sera of patients with prostatic carcinoma. It is predominantly complexed to a liver-derived serine protease inhibitor, alpha-1-antichymotrypsin (ACT). A higher proportion of serum PSA is complexed to ACT in prostate cancer than in benign prostate hyperplasia.

References

ISOBM TD-3 Workshop, Tum. Biol. 20 (S1), pp 1-94, Eds. Rye P.D. et al. (1999). Huang et al. Prostate-specific antigen immunosensing based on mixed self-assembled monolayers, camel antibodies and colloidal gold enhanced sandwich assays. Biosensors and Bioelectronics. 21/3; 483-490 (2005)

Images



Formalin-fixed, paraffin-embedded human Prostate Carcinoma stained with PSA Monoclonal Antibody (KLK3/801 + KLK3/1248).

Please note: All products are 'FOR RESEARCH USE ONLY. NOT FOR USE IN DIAGNOSTIC OR THERAPEUTIC PROCEDURES'.