

Cytokeratin 10 (KRT10) (Suprabasal Epithelial Marker) Antibody - With BSA and Azide

Mouse Monoclonal Antibody [Clone KRT10/844]

Catalog # AH11683

Product Information

Application	IHC, IF, FC
Primary Accession	P13645
Other Accession	3858 , 99936
Reactivity	Human, Mouse
Host	Mouse
Clonality	Monoclonal
Isotype	Mouse / IgG1, kappa
Clone Names	KRT10/844
Calculated MW	58827

Additional Information

Gene ID	3858
Other Names	Keratin, type I cytoskeletal 10, Cytokeratin-10, CK-10, Keratin-10, K10, KRT10, KPP
Application Note	IHC~~1:100~500 IF~~1:50~200 FC~~1:10~50
Storage	Store at 2 to 8°C.Antibody is stable for 24 months.
Precautions	Cytokeratin 10 (KRT10) (Suprabasal Epithelial Marker) Antibody - With BSA and Azide is for research use only and not for use in diagnostic or therapeutic procedures.

Protein Information

Name	KRT10
Synonyms	KPP
Function	Plays a role in the establishment of the epidermal barrier on plantar skin (By similarity). Involved in the maintenance of cell layer development and keratin filament bundles in suprabasal cells of the epithelium (By similarity).
Cellular Location	Secreted, extracellular space. Cell surface. Cytoplasm
Tissue Location	Seen in all suprabasal cell layers including stratum corneum. Expressed on the surface of lung cell lines (PubMed:19627498). Localized on the surface of desquamated nasal epithelial cells (at protein level) (PubMed:12427098)

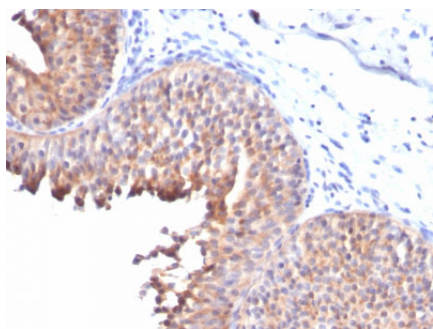
Background

This MAb recognizes a protein of 56.5kDa, identified as cytokeratin 10 (CK10). CK10 is expressed in all suprabasal layers of the epidermis. In the epidermis, expression of CK10 strictly parallels the extent of differentiation; it is absent in the basal layer, appears in the first suprabasal layers and increases in concentration towards the granular layer. However, CK10 is rarely detected in early stages of vulvar squamous carcinomas (tumors less than 2 cm, clinical stage I) regardless of the tumor grade. In larger and more advanced tumors (greater than 2 cm, clinical stages II and III), CK10 is detected very frequently. Expression of CK10 is related to maturation of malignant keratinocytes, being preferentially detected in more-differentiated parts.

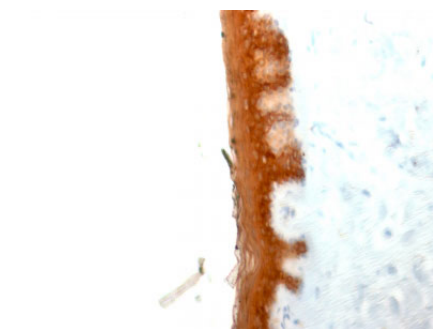
References

van der Velden, L.A., et al. 1993. Cytokeratin expression in normal and (pre) malignant head and neck epithelia: an overview. *Head Neck* 15: 133-146

Images



Formalin-fixed, paraffin-embedded human Bladder Carcinoma stained with Cytokeratin 10 Monoclonal Antibody (KRT10/844).



Formalin-fixed, paraffin-embedded human Skin stained with Cytokeratin 10 Monoclonal Antibody (KRT10/844).

Please note: All products are 'FOR RESEARCH USE ONLY. NOT FOR USE IN DIAGNOSTIC OR THERAPEUTIC PROCEDURES'.