

Cytokeratin 18 (KRT18) Antibody - With BSA and Azide

Mouse Monoclonal Antibody [Clone C-04; same as Ks18.04]

Catalog # AH11717

Product Information

Application	IHC, IF, FC
Primary Accession	P05783
Other Accession	3875 , 406013
Reactivity	Human, Mouse, Rat, Hamster, Pig, Chicken, Goat, Bovine, Marmoset, Sheep, Xenopus, Cat, Horse, Dog
Host	Mouse
Clonality	Monoclonal
Isotype	Mouse / IgG1, kappa
Clone Names	C-04; same as Ks18.04
Calculated MW	48058

Additional Information

Gene ID	3875
Other Names	Keratin, type I cytoskeletal 18, Cell proliferation-inducing gene 46 protein, Cytokeratin-18, CK-18, Keratin-18, K18, KRT18, CYK18
Application Note	IHC~~1:100~500 IF~~1:50~200 FC~~1:10~50
Storage	Store at 2 to 8°C.Antibody is stable for 24 months.
Precautions	Cytokeratin 18 (KRT18) Antibody - With BSA and Azide is for research use only and not for use in diagnostic or therapeutic procedures.

Protein Information

Name	KRT18
Synonyms	CYK18
Function	Involved in the uptake of thrombin-antithrombin complexes by hepatic cells (By similarity). When phosphorylated, plays a role in filament reorganization. Involved in the delivery of mutated CFTR to the plasma membrane. Together with KRT8, is involved in interleukin-6 (IL-6)-mediated barrier protection.
Cellular Location	Nucleus matrix {ECO:0000250 UniProtKB:Q5BJY9}. Cytoplasm, perinuclear region. Nucleus, nucleolus. Cytoplasm {ECO:0000250 UniProtKB:Q5BJY9}
Tissue Location	Expressed in colon, placenta, liver and very weakly in exocervix. Increased expression observed in lymph nodes of breast carcinoma.

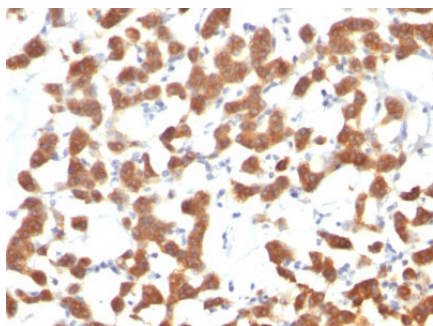
Background

This MAb reacts with a wide variety of simple epithelia. It does not react with stratified squamous epithelia. It reacts with epithelial tumors of the gastrointestinal tract, lung, breast, pancreas, ovary, and thyroid. Cytokeratin 18, which belongs to the type A (acidic) subfamily of low molecular weight keratins, exists in combination with cytokeratin 8. It was reported that tissues from gastrointestinal tract are positive for both cytokeratin 8 and 18 but do not contain cytokeratin 14. Tissues from gastrointestinal tract, respiratory tract and urogenital tract, as well as endocrine and exocrine tissues and mesothelial cells are positive for cytokeratin 18.

References

Lauerov \square et al. Hybridoma 7: 495-504 (1988). | Kova \square ek et al. Int.J.Cancer Suppl.3: 50-5 (1988). | Taylor -Papadimitriou et.al. J.Cell Sci. 94: 403-13 (1989). | Vojt \square ek et al. Folia Biol. 35(6): 373-382 (1989)

Images



Formalin-fixed, paraffin-embedded human Thyroid Carcinoma stained with Cytokeratin 18 Monoclonal Antibody (C-04).

Please note: All products are 'FOR RESEARCH USE ONLY. NOT FOR USE IN DIAGNOSTIC OR THERAPEUTIC PROCEDURES'.