

CD56 / NCAM1 / NKH1 (Neuronal Cell Marker) Antibody - With BSA and Azide

Mouse Monoclonal Antibody [Clone NCAM1/795]

Catalog # AH11975

Product Information

Application	WB, IHC, IF, FC
Primary Accession	P13591
Other Accession	4684 , 503878 , P13592
Reactivity	Human
Host	Mouse
Clonality	Monoclonal
Isotype	Mouse / IgG1, kappa
Clone Names	NCAM1/795
Calculated MW	94574

Additional Information

Gene ID	4684
Other Names	Neural cell adhesion molecule 1, N-CAM-1, NCAM-1, CD56, NCAM1, NCAM
Application Note	WB~~1:1000 IHC~~1:100~500 IF~~1:50~200 FC~~1:10~50
Storage	Store at 2 to 8°C.Antibody is stable for 24 months.
Precautions	CD56 / NCAM1 / NKH1 (Neuronal Cell Marker) Antibody - With BSA and Azide is for research use only and not for use in diagnostic or therapeutic procedures.

Protein Information

Name	NCAM1 (HGNC:7656)
Synonyms	NCAM
Function	This protein is a cell adhesion molecule involved in neuron- neuron adhesion, neurite fasciculation, outgrowth of neurites, etc. (Microbial infection) Acts as a receptor for Zika virus.
Cellular Location	[Isoform 1]: Cell membrane; Single-pass type I membrane protein [Isoform 3]: Cell membrane; Lipid-anchor, GPI- anchor [Isoform 5]: Secreted.

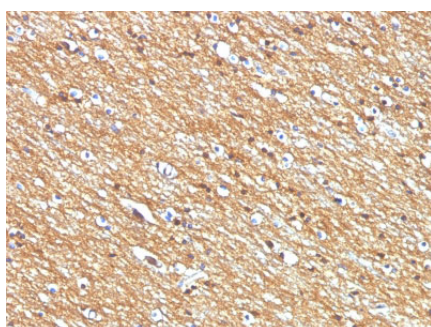
Background

This MAb reacts with an extracellular domain (close to transmembrane) of CD56/NCAM. Three isoforms of neural cell adhesion molecule (NCAM) are produced by differential splicing of the RNA transcript from a single gene. The 135kDa isoform is the basic molecule, which is glycosylated or sialylated to produce the mature species. Anti-CD56 recognizes two proteins of the neural cell adhesion molecule, the basic molecule expressed on most neuroectodermally derived tissues and neoplasms (e.g. retinoblastoma, medulloblastomas, astrocytomas, neuroblastomas, and small cell carcinomas). It is also expressed on some mesodermally derived tumors (rhabdomyosarcoma). Anti-CD56 plays an important role in the diagnosis of nodal and nasal NK/T-cell lymphomas.

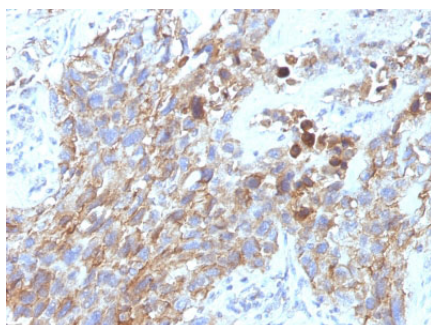
References

Endo, C., et al. 2009. Immunocytochemical evaluation of large cell neuroendocrine carcinoma of the lung. Acta Cytol. 53: 36-40

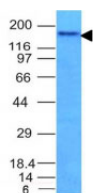
Images



Formalin-fixed, paraffin-embedded human Brain Tumor stained with CD56 Monoclonal Antibody (NCAM1/795)



Formalin-fixed, paraffin-embedded human Lung Carcinoma stained with CD56 Monoclonal Antibody (NCAM1/795)



Western Blot Analysis of HCT116 Cell Lysate using CD56 Monoclonal Antibody (NCAM1/795)

Please note: All products are 'FOR RESEARCH USE ONLY. NOT FOR USE IN DIAGNOSTIC OR THERAPEUTIC PROCEDURES'.