

Neurofilament (NF-L) (Neuronal Marker) Antibody - With BSA and Azide

Mouse Monoclonal Antibody [Clone NFL/736]

Catalog # AH12003

Product Information

Application	IHC, IF, FC
Primary Accession	P07196
Other Accession	4747 , 521461
Reactivity	Human, Rat, Pig, Chicken, Bovine
Host	Mouse
Clonality	Monoclonal
Isotype	Mouse / IgG1
Clone Names	NFL/736
Calculated MW	61517

Additional Information

Gene ID	4747
Other Names	Neurofilament light polypeptide, NF-L, 68 kDa neurofilament protein, Neurofilament triplet L protein, NEFL, NF68, NFL
Application Note	IHC~~1:100~500 IF~~1:50~200 FC~~1:10~50
Storage	Store at 2 to 8°C.Antibody is stable for 24 months.
Precautions	Neurofilament (NF-L) (Neuronal Marker) Antibody - With BSA and Azide is for research use only and not for use in diagnostic or therapeutic procedures.

Protein Information

Name	NEFL
Synonyms	NF68, NFL
Function	Neurofilaments usually contain three intermediate filament proteins: NEFL, NEFM, and NEFH which are involved in the maintenance of neuronal caliber. May additionally cooperate with the neuronal intermediate filament proteins PRPH and INA to form neuronal filamentous networks (By similarity).
Cellular Location	Cell projection, axon {ECO:0000250 UniProtKB:P08551}. Cytoplasm, cytoskeleton {ECO:0000250 UniProtKB:P08551}

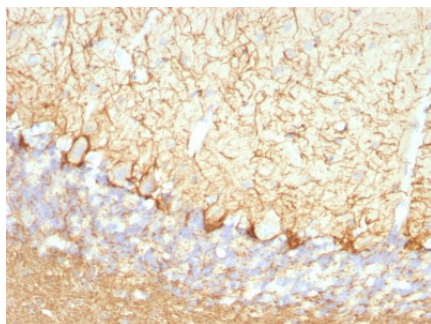
Background

This MAb reacts with a 68kDa protein, identified as light sub-unit of neurofilaments (NF-L). Neurofilaments make up the main structural elements of axons and dendrites and are found in neurons, peripheral nerves, and sympathetic ganglion cells. Neurofilaments consist of three major subunits with molecular weights of 68kDa (NF-L), 160kDa (NF-M) and 200kDa (NF-H). Anti-neurofilament stains a number of neural, neuroendocrine, and endocrine tumors. Neuromas, ganglioneuromas, gangliogliomas, ganglioneuroblastomas, and neuroblastomas stain positively for anti-neurofilament. Neurofilaments are also present in paragangliomas as well as adrenal and extra-adrenal pheochromocytomas. Carcinoids, neuroendocrine carcinomas of the skin, and oat cell carcinomas of the lung also express neurofilament.

References

Angelides, K.J., et. al. 1989. J. Cell Biol. 108: 1495-1506. |

Images



Formalin-fixed, paraffin-embedded Rat Cerebellum stained with Neurofilament Monoclonal Antibody (NFL/736).

Please note: All products are 'FOR RESEARCH USE ONLY. NOT FOR USE IN DIAGNOSTIC OR THERAPEUTIC PROCEDURES'.