

# PD1 / PDCD1 / CD279 (Programmed Cell Death 1) Antibody - With BSA and Azide

Mouse Monoclonal Antibody [Clone SPM597 ]

Catalog # AH12056

## Product Information

Application	IHC, IF, FC
Primary Accession	<a href="#">Q15116</a>
Other Accession	<a href="#">5133</a> , <a href="#">158297</a>
Reactivity	Human
Host	Mouse
Clonality	Monoclonal
Isotype	Mouse / IgG1, kappa
Clone Names	SPM597
Calculated MW	31647

## Additional Information

Gene ID	5133
Other Names	Programmed cell death protein 1, Protein PD-1, hPD-1, CD279, PDCD1, PD1
Application Note	IHC~~1:100~500 IF~~1:50~200 FC~~1:10~50
Storage	Store at 2 to 8°C.Antibody is stable for 24 months.
Precautions	PD1 / PDCD1 / CD279 (Programmed Cell Death 1) Antibody - With BSA and Azide is for research use only and not for use in diagnostic or therapeutic procedures.

## Protein Information

Name	PDCD1 {ECO:0000303   PubMed:7851902, ECO:0000312   HGNC:HGNC:8760}
Function	Inhibitory receptor on antigen activated T-cells that plays a critical role in induction and maintenance of immune tolerance to self (PubMed: <a href="#">21276005</a> , PubMed: <a href="#">37208329</a> ). Delivers inhibitory signals upon binding to ligands CD274/PDCD1L1 and CD273/PDCD1LG2 (PubMed: <a href="#">21276005</a> ). Following T-cell receptor (TCR) engagement, PDCD1 associates with CD3- TCR in the immunological synapse and directly inhibits T-cell activation (By similarity). Suppresses T-cell activation through the recruitment of PTPN11/SHP-2: following ligand-binding, PDCD1 is phosphorylated within the ITSM motif, leading to the recruitment of the protein tyrosine phosphatase PTPN11/SHP-2 that mediates dephosphorylation of key TCR proximal signaling molecules, such as ZAP70, PRKCQ/PKCtheta and CD247/CD3zeta (By similarity).

## Background

---

PDCD-1 (programmed cell death-1 protein), also designated CD279, is a type I transmembrane receptor and a member of the immunoglobulin gene superfamily. It is expressed on activated T-cells, B-cells, and myeloid cells. Anti-PDCD-1 is a marker of angioimmunoblastic lymphoma and suggests a unique cell of origin for this neoplasm. Unlike CD10 and BCL6, PDCD-1 is expressed by few B-cells, so anti-PDCD-1 may be a more specific and useful diagnostic marker in angioimmunoblastic lymphoma. In addition, PDCD-1 expression provides evidence that angioimmunoblastic lymphoma is a neoplasm derived from germinal center-associated T-cells.

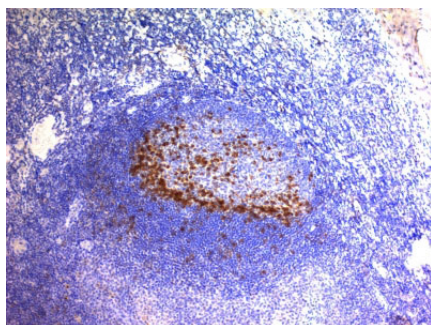
## References

---

Roncador, G., Verdes-Montenegro, J.F.G., Tedoldi, S., Paterson, J.C., Klapper, W., Ballabio, E., Maestre, L., Pileri, S., Hansmann, M.L., Piris, M.A., Mason, D.Y., Marafioti, T. Expression of two markers of germinal center T cells (SAP and PD-1) in angioimmunoblastic T-cell lymphoma. *Haematologica*. 2007 Aug;92(8):1059-66. |

## Images

---



Formalin-fixed, paraffin-embedded human Tonsil stained with PD1 (CD279) Monoclonal Antibody (SPM597).

Please note: All products are 'FOR RESEARCH USE ONLY. NOT FOR USE IN DIAGNOSTIC OR THERAPEUTIC PROCEDURES'.