

Cytochrome C (Mitochondrial Marker) Antibody - With BSA and Azide

Mouse Monoclonal Antibody [Clone SPM389]

Catalog # AH12096

Product Information

Application	WB, IHC, IF, FC
Primary Accession	P99999
Other Accession	54205 , 437060
Reactivity	Human, Mouse, Rat, Horse, Dog
Host	Mouse
Clonality	Monoclonal
Isotype	Mouse / IgG2b, kappa
Clone Names	SPM389
Calculated MW	11749

Additional Information

Gene ID	54205
Other Names	Cytochrome c, CYCS, CYC
Application Note	WB~~1:1000 IHC~~1:100~500 IF~~1:50~200 FC~~1:10~50
Storage	Store at 2 to 8°C.Antibody is stable for 24 months.
Precautions	Cytochrome C (Mitochondrial Marker) Antibody - With BSA and Azide is for research use only and not for use in diagnostic or therapeutic procedures.

Protein Information

Name	CYCS
Synonyms	CYC
Function	Electron carrier protein. The oxidized form of the cytochrome c heme group can accept an electron from the heme group of the cytochrome c1 subunit of cytochrome reductase. Cytochrome c then transfers this electron to the cytochrome oxidase complex, the final protein carrier in the mitochondrial electron-transport chain.
Cellular Location	Mitochondrion intermembrane space. Note=Loosely associated with the inner membrane

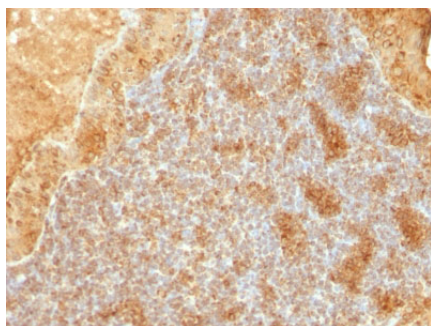
Background

It recognizes an epitope within amino acids 93-104 of pigeon Cytochrome C, a well-characterized mobile electron transport protein that is essential to energy conversion in all aerobic organisms. In mammalian cells, this highly conserved protein is normally localized to the mitochondrial inter-membrane space. More recent studies have identified cytosolic cytochrome c as a factor necessary for activation of apoptosis. During apoptosis, cytochrome c is trans-located from the mitochondrial membrane to the cytosol, where it is required for activation of caspase-3 (CPP32). Overexpression of Bcl-2 has been shown to prevent the translocation of cytochrome c, thereby blocking the apoptotic process. Overexpression of Bax has been shown to induce the release of cytochrome c and to induce cell death. The release of cytochrome c from the mitochondria is thought to trigger an apoptotic cascade, whereby Apaf-1 binds to Apaf-3 (caspase-9) in a cytochrome c-dependent manner, leading to caspase-9 cleavage of caspase-3. This MAb recognizes total cytochrome C which includes both apocytochrome (i.e. cytochrome in the cytosol without heme attached) and holocytochrome (i.e cytochrome in the mitochondria with heme attached).

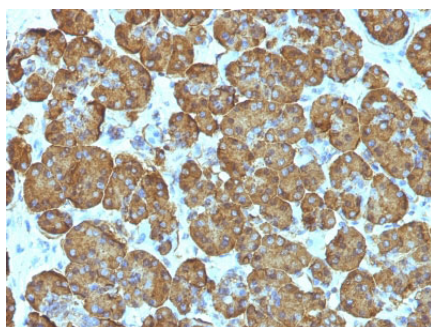
References

Goshorn SG, E Retzel, and R Jemmerson. Common Structural Features among Monoclonal Antibodies Binding the Same Antigenic Region of Cytochrome c. J Biol Chem 266:2134-2142 (1991). |

Images



Formalin-fixed, paraffin-embedded human Salivary Tumor stained with Cytochrome C Monoclonal Antibody (SPM389).



Formalin-fixed, paraffin-embedded human Pancreas stained with Cytochrome C Monoclonal Antibody (SPM389).

Please note: All products are 'FOR RESEARCH USE ONLY. NOT FOR USE IN DIAGNOSTIC OR THERAPEUTIC PROCEDURES'.