

CD45RA (Leucocyte Marker) Antibody - With BSA and Azide

Mouse Monoclonal Antibody [Clone PTPRC/818]
Catalog # AH12176

Product Information

Application	IHC, IF, FC
Primary Accession	P08575
Other Accession	5788 , 654514
Reactivity	Human
Host	Mouse
Clonality	Monoclonal
Isotype	Mouse / IgG2a, kappa
Clone Names	PTPRC/818
Calculated MW	147486

Additional Information

Gene ID	5788
Other Names	Receptor-type tyrosine-protein phosphatase C, 3.1.3.48, Leukocyte common antigen, L-CA, T200, CD45, PTPRC, CD45
Application Note	IHC~~1:100~500 IF~~1:50~200 FC~~1:10~50
Storage	Store at 2 to 8°C.Antibody is stable for 24 months.
Precautions	CD45RA (Leucocyte Marker) Antibody - With BSA and Azide is for research use only and not for use in diagnostic or therapeutic procedures.

Protein Information

Name	PTPRC (HGNC:9666)
Synonyms	CD45
Function	Protein tyrosine-protein phosphatase required for T-cell activation through the antigen receptor (PubMed: 35767951). Acts as a positive regulator of T-cell coactivation upon binding to DPP4. The first PTPase domain has enzymatic activity, while the second one seems to affect the substrate specificity of the first one. Upon T-cell activation, recruits and dephosphorylates SKAP1 and FYN. Dephosphorylates LYN, and thereby modulates LYN activity (By similarity). Interacts with CLEC10A at antigen presenting cell-T cell contact; CLEC10A on immature dendritic cells recognizes Tn antigen- carrying PTPRC/CD45 receptor on effector T cells and modulates T cell activation threshold to limit autoreactivity.

Cellular Location	Cell membrane; Single-pass type I membrane protein. Membrane raft. Synapse. Note=Colocalized with DPP4 in membrane rafts.
Tissue Location	Isoform 1: Detected in thymocytes. Isoform 2: Detected in thymocytes. Isoform 3: Detected in thymocytes. Isoform 4: Not detected in thymocytes. Isoform 5: Detected in thymocytes. Isoform 6: Not detected in thymocytes. Isoform 7: Detected in thymocytes Isoform 8: Not detected in thymocytes.

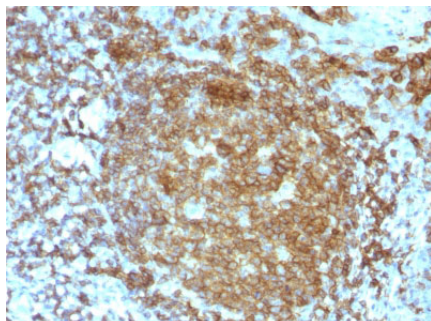
Background

Recognizes a protein of 205kDa-220kDa, identified as CD45RA. CD45RA is isoforms of the human leukocyte common antigen (CD45). Human CD45 contains three exons which encode peptide segments designated A, B and C, respectively. The differential splicing of the exons generates at least five isoforms, ABC, AB, BC, B and O. This antibody reacts with ABC and BC isoforms. CD45RA is expressed on 40-50% of peripheral CD4+ T-cells, 50% of peripheral CD8+ T-cells, B-cells, and leukemic B-cell lines. T-cells expressing CD45RA are naive or virgin T-cells. T-cells expressing CD45RO are memory T-cells. CD45RA and CD45RO define complementary, predominantly non-overlapping populations of resting peripheral T-cells. This MAb is useful in study on the subpopulation of CD4+ or CD8+ T-cells. It can especially be used to differentiate T-cell lymphomas (CD45RO +ve) from B cell lymphomas (CD45RA +ve).

References

West, K.P., et al. 1986. The demonstration of B-cell, T-cell and myeloid antigens in paraffin sections. J. Pathol. 150: 89-101. | Streuli, M., et al. 1987. Differential usage of three exons generates at least five different mRNAs encoding human leukocyte common antigens. J. Exp. Med. 166: 1548-1566

Images



Formalin-fixed, paraffin-embedded human Tonsil stained with CD45RA Monoclonal Antibody (PTPRC/818).

Please note: All products are 'FOR RESEARCH USE ONLY. NOT FOR USE IN DIAGNOSTIC OR THERAPEUTIC PROCEDURES'.