

CD45RB (B-Cell Marker) Antibody - With BSA and Azide

Mouse Monoclonal Antibody [Clone PTPRC/1147]

Catalog # AH12185

Product Information

Application	WB, IHC, IF, FC
Primary Accession	P08575
Other Accession	5788 , 654514
Reactivity	Human
Host	Mouse
Clonality	Monoclonal
Isotype	Mouse / IgG1, kappa
Clone Names	PTPRC/1147
Calculated MW	147486

Additional Information

Gene ID	5788
Other Names	Receptor-type tyrosine-protein phosphatase C, 3.1.3.48, Leukocyte common antigen, L-CA, T200, CD45, PTPRC, CD45
Application Note	WB~~1:1000 IHC~~1:100~500 IF~~1:50~200 FC~~1:10~50
Storage	Store at 2 to 8°C.Antibody is stable for 24 months.
Precautions	CD45RB (B-Cell Marker) Antibody - With BSA and Azide is for research use only and not for use in diagnostic or therapeutic procedures.

Protein Information

Name	PTPRC (HGNC:9666)
Synonyms	CD45
Function	Protein tyrosine-protein phosphatase required for T-cell activation through the antigen receptor (PubMed: 35767951). Acts as a positive regulator of T-cell coactivation upon binding to DPP4. The first PTPase domain has enzymatic activity, while the second one seems to affect the substrate specificity of the first one. Upon T-cell activation, recruits and dephosphorylates SKAP1 and FYN. Dephosphorylates LYN, and thereby modulates LYN activity (By similarity). Interacts with CLEC10A at antigen presenting cell-T cell contact; CLEC10A on immature dendritic cells recognizes Tn antigen- carrying PTPRC/CD45 receptor on effector T cells and modulates T cell activation threshold to limit autoreactivity.

Cellular Location	Cell membrane; Single-pass type I membrane protein. Membrane raft. Synapse. Note=Colocalized with DPP4 in membrane rafts.
Tissue Location	Isoform 1: Detected in thymocytes. Isoform 2: Detected in thymocytes. Isoform 3: Detected in thymocytes. Isoform 4: Not detected in thymocytes. Isoform 5: Detected in thymocytes. Isoform 6: Not detected in thymocytes. Isoform 7: Detected in thymocytes Isoform 8: Not detected in thymocytes.

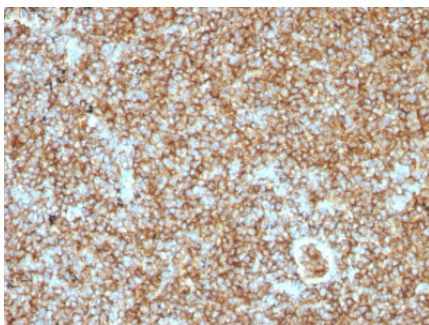
Background

CD45R, also designated CD45 and PTPRC, has been identified as a transmembrane glycoprotein, broadly expressed among hematopoietic cells. Multiple isoforms of CD45R are distributed throughout the immune system according to cell type. These isoforms arise because of alternative splicing of exons 4, 5, and 6. The corresponding protein domains are characterized by the binding of monoclonal antibodies specific for CD45RA (exon 4), CD45RB (exon 5), CD45RC (exon 6) and CD45RO (exons 4 to 6 spliced out). The variation in these isoforms is localized to the extracellular domain of CD45R, while the intracellular domain is conserved. CD45RB is expressed on mature B-lymphocytes and the majority of lymphomas and leukemias of B-cell origin.

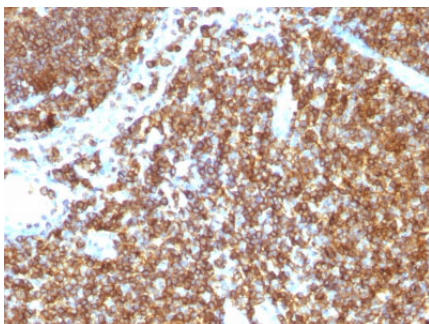
References

Gatter KC et. al. Lancet, 1985 Jun 8, 1(8441):1302-5. | Michie SA et. al. American Journal of Clinical Pathology, 1987, 88(4):457-62

Images

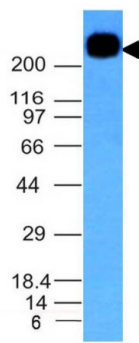


Formalin-fixed, paraffin-embedded human Lymphoma stained with CD45RB Monoclonal Antibody (PTPRC/1147).



Formalin-fixed, paraffin-embedded human Tonsil stained with CD45RB Monoclonal Antibody (PTPRC/1147).

Western Blot Analysis of Daudi Cell Lysate using CD45RB Monoclonal Antibody (PTPRC/1147).



Please note: All products are 'FOR RESEARCH USE ONLY. NOT FOR USE IN DIAGNOSTIC OR THERAPEUTIC PROCEDURES'.