

# Actin, Smooth Muscle (Leiomyosarcoma Marker) Antibody - With BSA and Azide

Mouse Monoclonal Antibody [Clone ACTA2/791 ]

Catalog # AH12223

## Product Information

---

|                   |   |
|-------------------|---|
| Application       | IHC, IF, FC                                 |
| Primary Accession | <a href="#">P62736</a>                      |
| Other Accession   | <a href="#">59</a> , <a href="#">500483</a> |
| Reactivity        | Human, Rat                                  |
| Host              | Mouse                                       |
| Clonality         | Monoclonal                                  |
| Isotype           | Mouse / IgG2a, kappa                        |
| Clone Names       | ACTA2/791                                   |
| Calculated MW     | 42009                                       |

## Additional Information

---

|                  |  |
|------------------|--|
| Gene ID          | 59   |
| Other Names      | Actin, aortic smooth muscle, Alpha-actin-2, Cell growth-inhibiting gene 46 protein, ACTA2, ACTSA, ACTVS  |
| Application Note | IHC~~1:100~500 IF~~1:50~200 FC~~1:10~50  |
| Storage          | Store at 2 to 8°C.Antibody is stable for 24 months.  |
| Precautions      | Actin, Smooth Muscle (Leiomyosarcoma Marker) Antibody - With BSA and Azide is for research use only and not for use in diagnostic or therapeutic procedures. |

## Protein Information

---

|                   |  |
|-------------------|--|
| Name              | ACTA2  |
| Synonyms          | ACTSA, ACTVS   |
| Function          | Actins are highly conserved proteins that are involved in various types of cell motility and are ubiquitously expressed in all eukaryotic cells. |
| Cellular Location | Cytoplasm, cytoskeleton.   |

## Background

---

Actin is a major component of the cytoskeleton and is present in most cell types. It is highly specific to actin from smooth muscles. This MAb does not stain cardiac or skeletal muscle; however, it does stain myofibroblasts and myoepithelial cells. This antibody could be used together with anti-muscle specific actin and myogenin in making a diagnosis of smooth muscle and skeletal muscle tumors. In most cases of rhabdomyosarcoma, this antibody yields negative results whereas anti-muscle specific actin and myogenin are positive. Leiomyosarcomas are positive only with anti-muscle specific actin and anti-smooth muscle actin and are negative with anti-myogenin.

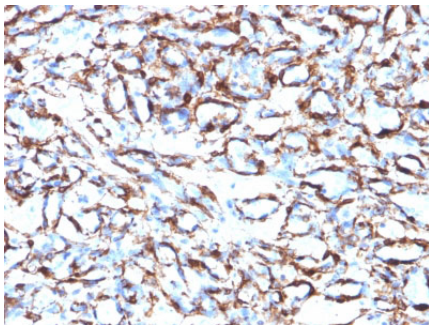
## References

---

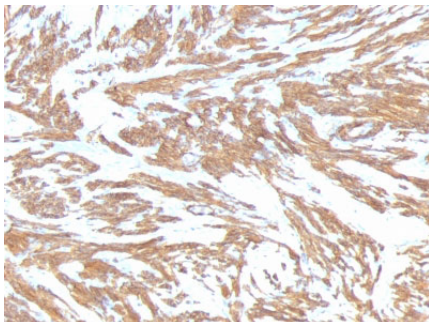
Gown, A.M., et al. 1985. A smooth muscle-specific monoclonal antibody recognizes smooth muscle actin isozymes. J. Cell Biol. 100: 807-813. |

## Images

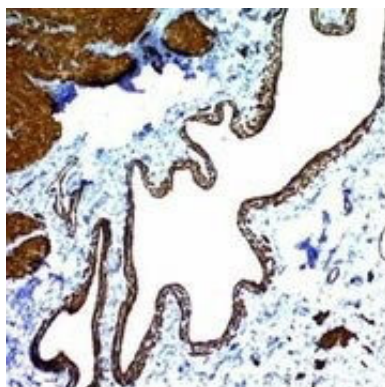
---



Formalin-fixed, paraffin-embedded human Angiosarcoma stained with Smooth Muscle Actin Monoclonal Antibody (ACTA2/791).

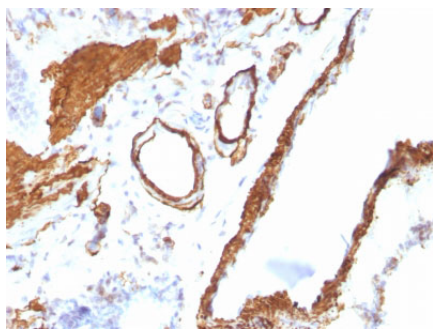


Formalin-fixed, paraffin-embedded human Leiomyosarcoma stained with Smooth Muscle Actin Monoclonal Antibody (ACTA2/791).



Formalin-fixed, paraffin-embedded human Colon Carcinoma stained with Smooth Muscle Actin Monoclonal Antibody (ACTA2/791).

Formalin-fixed, paraffin-embedded Rat Lung stained with Smooth Muscle Actin Monoclonal Antibody (ACTA2/791).



Please note: All products are 'FOR RESEARCH USE ONLY. NOT FOR USE IN DIAGNOSTIC OR THERAPEUTIC PROCEDURES'.