

# Sex Hormone Binding Globulin (SHBG) Antibody - With BSA and Azide

Mouse Monoclonal Antibody [Clone SHBG/245 ]

Catalog # AH12299

## Product Information

---

Application	IHC, IF, FC
Primary Accession	<a href="#">P04278</a>
Other Accession	<a href="#">6462</a> , <a href="#">632235</a>
Reactivity	Human
Host	Mouse
Clonality	Monoclonal
Isotype	Mouse / IgG1
Clone Names	SHBG/245
Calculated MW	43779

## Additional Information

---

Gene ID	6462
Other Names	Sex hormone-binding globulin, SHBG, Sex steroid-binding protein, SBP, Testis-specific androgen-binding protein, ABP, Testosterone-estradiol-binding globulin, TeBG, Testosterone-estrogen-binding globulin, SHBG
Application Note	IHC~~1:100~500 IF~~1:50~200 FC~~1:10~50
Storage	Store at 2 to 8°C.Antibody is stable for 24 months.
Precautions	Sex Hormone Binding Globulin (SHBG) Antibody - With BSA and Azide is for research use only and not for use in diagnostic or therapeutic procedures.

## Protein Information

---

Name	SHBG ( <a href="#">HGNC:10839</a> )
Function	Functions as an androgen transport protein, but may also be involved in receptor mediated processes. Each dimer binds one molecule of steroid. Specific for 5-alpha-dihydrotestosterone, testosterone, and 17-beta-estradiol. Regulates the plasma metabolic clearance rate of steroid hormones by controlling their plasma concentration.
Cellular Location	Secreted. Note=In testis, it is synthesized by the Sertoli cells, secreted into the lumen of the seminiferous tubule and transported to the epididymis.
Tissue Location	Isoform 1 and isoform 2 are present in liver and testis

## Background

---

Recognizes a protein of 45kDa, identified as SHBG. It functions as an androgen transport protein, but may also be involved in receptor-mediated processes. Each dimer binds one molecule of steroid. It is specific for 5-alpha-dihydrotestosterone, testosterone, and 17-beta-estradiol. SHBG regulates the plasma metabolic clearance rate of steroid hormones by controlling their plasma concentration. In testis, it is synthesized by the Sertoli cells, secreted into the lumen of the seminiferous tubule and transported to the epididymis.

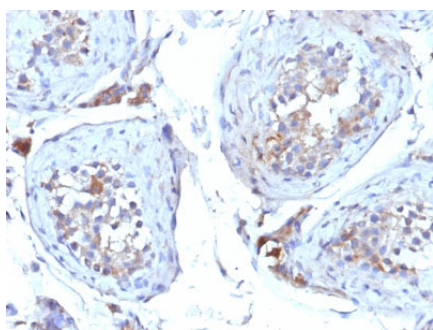
## References

---

Grishkovskaya, I., et al. 2000. Crystal structure of human sex hormone-binding globulin: steroid transport by a laminin G-like domain. EMBO. J. 19: 504-512. |

## Images

---



Formalin-fixed, paraffin-embedded human Testicular Carcinoma stained with SHBG Monoclonal Antibody (SHBG/245)

Please note: All products are 'FOR RESEARCH USE ONLY. NOT FOR USE IN DIAGNOSTIC OR THERAPEUTIC PROCEDURES'.