

Sex Hormone Binding Globulin (SHBG) Antibody - With BSA and Azide

Mouse Monoclonal Antibody [Clone SPM605]

Catalog # AH12302

Product Information

| | |
|-------------------|---|
| Application | IHC, IF, FC |
| Primary Accession | P04278 |
| Other Accession | 6462 , 632235 |
| Reactivity | Human |
| Host | Mouse |
| Clonality | Monoclonal |
| Isotype | Mouse / IgG1 |
| Clone Names | SPM605 |
| Calculated MW | 43779 |

Additional Information

| | |
|------------------|--|
| Gene ID | 6462 |
| Other Names | Sex hormone-binding globulin, SHBG, Sex steroid-binding protein, SBP, Testis-specific androgen-binding protein, ABP, Testosterone-estradiol-binding globulin, TeBG, Testosterone-estrogen-binding globulin, SHBG |
| Application Note | IHC~~1:100~500 IF~~1:50~200 FC~~1:10~50 |
| Storage | Store at 2 to 8°C.Antibody is stable for 24 months. |
| Precautions | Sex Hormone Binding Globulin (SHBG) Antibody - With BSA and Azide is for research use only and not for use in diagnostic or therapeutic procedures. |

Protein Information

| | |
|-------------------|--|
| Name | SHBG (HGNC:10839) |
| Function | Functions as an androgen transport protein, but may also be involved in receptor mediated processes. Each dimer binds one molecule of steroid. Specific for 5-alpha-dihydrotestosterone, testosterone, and 17-beta-estradiol. Regulates the plasma metabolic clearance rate of steroid hormones by controlling their plasma concentration. |
| Cellular Location | Secreted. Note=In testis, it is synthesized by the Sertoli cells, secreted into the lumen of the seminiferous tubule and transported to the epididymis. |
| Tissue Location | Isoform 1 and isoform 2 are present in liver and testis |

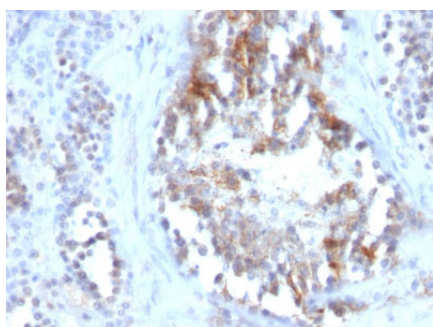
Background

Recognizes a protein of 45kDa, identified as SHBG. It functions as an androgen transport protein, but may also be involved in receptor-mediated processes. Each dimer binds one molecule of steroid. It is specific for 5-alpha-dihydrotestosterone, testosterone, and 17-beta-estradiol. SHBG regulates the plasma metabolic clearance rate of steroid hormones by controlling their plasma concentration. In testis, it is synthesized by the Sertoli cells, secreted into the lumen of the seminiferous tubule and transported to the epididymis.

References

Grishkovskaya, I., et al. 2000. Crystal structure of human sex hormone-binding globulin: steroid transport by a laminin G-like domain. EMBO. J. 19: 504-512. |

Images



Formalin-fixed, paraffin-embedded human Testicular Carcinoma stained with SHBG Monoclonal Antibody (SPM605)

Please note: All products are 'FOR RESEARCH USE ONLY. NOT FOR USE IN DIAGNOSTIC OR THERAPEUTIC PROCEDURES'.