

CDw75 (B-Cell Marker) Antibody - With BSA and Azide

Mouse Monoclonal Antibody [Clone LN-1]

Catalog # AH12304

Product Information

Application	IHC, IF, FC
Primary Accession	P15907
Other Accession	6480 , 207459
Reactivity	Human
Host	Mouse
Clonality	Monoclonal
Isotype	Mouse / IgM, kappa
Clone Names	LN-1
Calculated MW	46605

Additional Information

Gene ID	6480
Other Names	Beta-galactoside alpha-2, 6-sialyltransferase 1, Alpha 2, 6-ST 1, 2.4.99.1, B-cell antigen CD75, CMP-N-acetylneuraminate-beta-galactosamide-alpha-2, 6-sialyltransferase 1, ST6Gal I, ST6GalI, Sialyltransferase 1, ST6GAL1, SIAT1
Application Note	IHC~~1:100~500 IF~~1:50~200 FC~~1:10~50
Storage	Store at 2 to 8°C.Antibody is stable for 24 months.
Precautions	CDw75 (B-Cell Marker) Antibody - With BSA and Azide is for research use only and not for use in diagnostic or therapeutic procedures.

Protein Information

Name	ST6GAL1
Synonyms	SIAT1
Function	Transfers sialic acid from CMP-sialic acid to galactose- containing acceptor substrates. In B lymphocytes, generates neuraminidase-sensitive lymphocyte cell-surface differentiation antigens, such as CDw75, HB-6 and CD76 (PubMed: 1730763).
Cellular Location	Golgi apparatus, Golgi stack membrane; Single-pass type II membrane protein. Secreted {ECO:0000250 UniProtKB:P13721}. Note=Membrane-bound form in trans cisternae of Golgi (PubMed:20378551). Secreted into the body fluid (By similarity). {ECO:0000250 UniProtKB:P13721, ECO:0000269 PubMed:20378551}

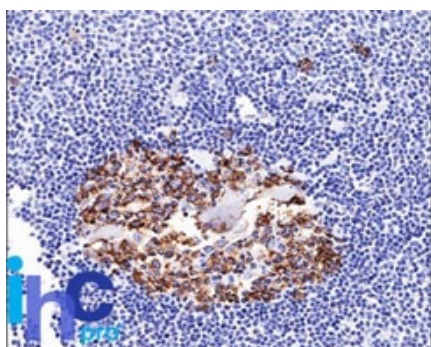
Background

Recognizes a neuraminidase-sensitive sialoprotein (CDw75), present on cell membrane and cytoplasm of germinal center B-cells and derived lymphomas. This MAb reacts with RBC precursors of bone marrow, ductal and ciliated epithelial cells of kidney, breast, prostate, pancreas, lung, and with glioblastomas, astrocytomas, and Reed Sternberg cells in lymphocyte predominant Hodgkin s disease. It is shown to be a helpful antibody for ascribing a B-cell phenotype in known lymphoid tissues.

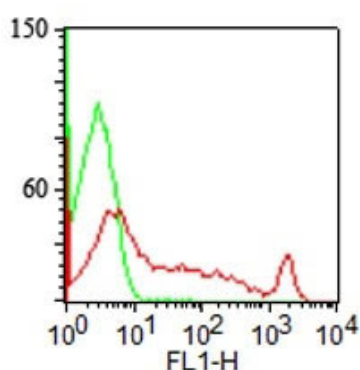
References

Epstein AL et. al. J of Immunology 133: 1028-1036, 1984. | Marder RJ et. al. Lab Invest 52: 497-504, 1985. |

Images



Formalin-fixed, paraffin-embedded normal human Spleen stained with CDw75 Monoclonal Antibody (LN-1).



Surface staining of human lymphocytes with CDw75 Monoclonal Antibody (LN-1) (red) and isotype control (green). PPI negative population analyzed.

Please note: All products are 'FOR RESEARCH USE ONLY. NOT FOR USE IN DIAGNOSTIC OR THERAPEUTIC PROCEDURES'.