

# gp100 / Melanosome / PMEL17 / SILV (Melanoma Marker) Antibody - With BSA and Azide

Mouse Monoclonal Antibody [Clone PMEL/783 ]

Catalog # AH12309

## Product Information

---

<b>Application</b>	IHC, IF, FC
<b>Primary Accession</b>	<a href="#">P40967</a>
<b>Other Accession</b>	<a href="#">6490</a> , <a href="#">95972</a>
<b>Reactivity</b>	Human
<b>Host</b>	Mouse
<b>Clonality</b>	Monoclonal
<b>Isotype</b>	Mouse / IgG1, kappa
<b>Clone Names</b>	PMEL/783
<b>Calculated MW</b>	90 KDa

## Additional Information

---

<b>Other Names</b>	Melanocyte protein PMEL, ME20-M, ME20M, Melanocyte protein Pmel 17, Melanocytes lineage-specific antigen GP100, Melanoma-associated ME20 antigen, P1, P100, Premelanosome protein, Silver locus protein homolog, M-alpha, 95 kDa melanocyte-specific secreted glycoprotein, P26, Secreted melanoma-associated ME20 antigen, ME20-S, ME20S, M-beta, PMEL, D12S53E, PMEL17, SILV
<b>Application Note</b>	IHC~~1:100~500 IF~~1:50~200 FC~~1:10~50
<b>Storage</b>	Store at 2 to 8°C.Antibody is stable for 24 months.
<b>Precautions</b>	gp100 / Melanosome / PMEL17 / SILV (Melanoma Marker) Antibody - With BSA and Azide is for research use only and not for use in diagnostic or therapeutic procedures.

## Protein Information

---

### Background

---

Cytotoxic T lymphocytes (CTLs) recognize melanoma-associated antigens, which belong to three main groups. These groups include tumor-associated testis-specific antigens, melanocyte differentiation antigens and mutated or aberrantly expressed antigens, which are routinely used as markers to identify melanomas based on their binding to specific monoclonal antibodies. gp100, also designated ME20-M, ME20-S and PMEL 17, is classified as a melanocyte differentiation antigen and is expressed at low levels in normal cell lines and tissues, but is upregulated in melanocytes. gp100 is a highly glycosylated protein. It is also the product of proteolytic cleavage, which results in a secreted protein. □

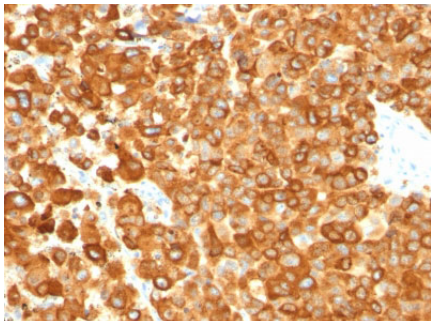
## References

---

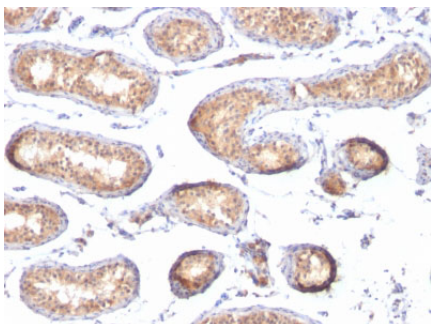
Adema, G.J., et al. 1994. Molecular characterization of the melanocyte lineage-specific antigen gp100. J. Biol. Chem. 269: 20126-20133

## Images

---



Formalin-fixed, paraffin-embedded human Melanoma stained with gp100 / Melanosome Monoclonal Antibody (PMEL/783).



Formalin-fixed, paraffin-embedded human Testis stained with gp100 / Melanosome Monoclonal Antibody (PMEL/783).

Please note: All products are 'FOR RESEARCH USE ONLY. NOT FOR USE IN DIAGNOSTIC OR THERAPEUTIC PROCEDURES'.