

# Fascin-1 (Reed-Sternberg Cell Marker) Antibody - With BSA and Azide

Mouse Monoclonal Antibody [Clone FSCN1/416 ]

Catalog # AH12326

## Product Information

---

Application	IF, FC, IHC-P
Primary Accession	<a href="#">Q16658</a>
Other Accession	<a href="#">6624</a> , <a href="#">118400</a>
Reactivity	Human
Host	Mouse
Clonality	Monoclonal
Isotype	Mouse / IgG2a, kappa
Clone Names	FSCN1/416
Calculated MW	54530

## Additional Information

---

Gene ID	6624
Other Names	Fascin, 55 kDa actin-bundling protein, Singed-like protein, p55, FSCN1, FAN1, HSN, SNL
Application Note	IF~~1:50~200 FC~~1:10~50 IHC-P~~N/A
Storage	Store at 2 to 8°C.Antibody is stable for 24 months.
Precautions	Fascin-1 (Reed-Sternberg Cell Marker) Antibody - With BSA and Azide is for research use only and not for use in diagnostic or therapeutic procedures.

## Protein Information

---

Name	FSCN1
Synonyms	FAN1, HSN, SNL
Function	Actin-binding protein that contains 2 major actin binding sites (PubMed: <a href="#">21685497</a> , PubMed: <a href="#">23184945</a> ). Organizes filamentous actin into parallel bundles (PubMed: <a href="#">20393565</a> , PubMed: <a href="#">21685497</a> , PubMed: <a href="#">23184945</a> ). Plays a role in the organization of actin filament bundles and the formation of microspikes, membrane ruffles, and stress fibers (PubMed: <a href="#">22155786</a> ). Important for the formation of a diverse set of cell protrusions, such as filopodia, and for cell motility and migration (PubMed: <a href="#">20393565</a> , PubMed: <a href="#">21685497</a> , PubMed: <a href="#">23184945</a> ). Mediates reorganization of the actin cytoskeleton and axon growth cone collapse in response to NGF (PubMed: <a href="#">22155786</a> ).

<b>Cellular Location</b>	Cytoplasm, cytosol. Cytoplasm, cell cortex. Cytoplasm, cytoskeleton. Cytoplasm, cytoskeleton, stress fiber. Cell projection, filopodium. Cell projection, invadopodium. Cell projection, microvillus. Cell junction. Note=Colocalized with RUFY3 and F-actin at filipodia of the axonal growth cone. Colocalized with DBN1 and F- actin at the transitional domain of the axonal growth cone (By similarity). {ECO:0000250 UniProtKB:Q61553, ECO:0000269 PubMed:21706053}
<b>Tissue Location</b>	Ubiquitous.

## Background

---

Recognizes a protein of 55kDa, which is identified as fascin-1. Its actin binding ability is regulated by phosphorylation. Antibody to fascin-1 is a very sensitive marker for Reed-Sternberg cells and variants in nodular sclerosis, mixed cellularity, and lymphocyte depletion Hodgkin's disease. It is uniformly negative in lymphoid cells, plasma cells, and myeloid cells. Fascin-1 is also expressed in dendritic cells. This marker may be helpful to distinguish between Hodgkin lymphoma and non-Hodgkin lymphoma in difficult cases. Also, the lack of expression of fascin-1 in the neoplastic follicles in follicular lymphoma may be helpful in distinguishing these lymphomas from reactive follicular hyperplasia in which the number of follicular dendritic cells is normal or increased. Antibody to fascin-1 has been suggested as a prognostic marker in neuroendocrine neoplasms of the lung as well as in ovarian cancer. Fascin-1 expression may be induced by Epstein-Barr virus (EBV) infection of B cells with the possibility that viral induction of fascin in lymphoid or other cell types must also be considered in EBV-positive cases.

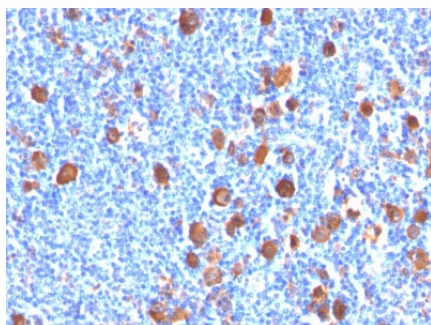
## References

---

Yamashiro-Matsumura S and Matsumura F. J Biol Chem 1985; 260(8): 5087. | Yamashiro-Matsumura S and Matsumura F. J Cell Biol 1986; 103:631. | Duh F-M, et al. DNA Cell Biol 1994; 13(8):821

## Images

---



Formalin-fixed, paraffin-embedded human Hodgkin's Lymphoma stained with Fascin-1 Monoclonal Antibody (FSCN1/416)

Please note: All products are 'FOR RESEARCH USE ONLY. NOT FOR USE IN DIAGNOSTIC OR THERAPEUTIC PROCEDURES'.