

# CD43 (T-Cell Marker) Antibody - With BSA and Azide

Mouse Monoclonal Antibody [Clone SPN/839 ]

Catalog # AH12354

## Product Information

---

<b>Application</b>	WB, IHC, IF, FC
<b>Primary Accession</b>	<a href="#">P16150</a>
<b>Other Accession</b>	<a href="#">6693</a> , <a href="#">632188</a>
<b>Reactivity</b>	Human
<b>Host</b>	Mouse
<b>Clonality</b>	Monoclonal
<b>Isotype</b>	Mouse / IgG1, kappa
<b>Clone Names</b>	SPN/839
<b>Calculated MW</b>	40322

## Additional Information

---

<b>Gene ID</b>	6693
<b>Other Names</b>	Leukosialin, Galactoglycoprotein, GALGP, Leukocyte sialoglycoprotein, Sialophorin, CD43, SPN, CD43
<b>Application Note</b>	WB~~1:1000 IHC~~1:100~500 IF~~1:50~200 FC~~1:10~50
<b>Storage</b>	Store at 2 to 8°C.Antibody is stable for 24 months.
<b>Precautions</b>	CD43 (T-Cell Marker) Antibody - With BSA and Azide is for research use only and not for use in diagnostic or therapeutic procedures.

## Protein Information

---

<b>Name</b>	SPN
<b>Synonyms</b>	CD43
<b>Function</b>	<p>Predominant cell surface sialoprotein of leukocytes which regulates multiple T-cell functions, including T-cell activation, proliferation, differentiation, trafficking and migration. Positively regulates T-cell trafficking to lymph-nodes via its association with ERM proteins (EZR, RDX and MSN) (By similarity). Negatively regulates Th2 cell differentiation and predisposes the differentiation of T-cells towards a Th1 lineage commitment. Promotes the expression of IFN-gamma by T-cells during T-cell receptor (TCR) activation of naive cells and induces the expression of IFN-gamma by CD4(+) T-cells and to a lesser extent by CD8(+) T-cells (PubMed:<a href="#">18036228</a>). Plays a role in preparing T-cells for cytokine sensing and differentiation into effector cells by inducing the expression of cytokine receptors IFNGR and IL4R, promoting IFNGR and</p>

IL4R signaling and by mediating the clustering of IFNGR with TCR (PubMed:[24328034](#)). Acts as a major E-selectin ligand responsible for Th17 cell rolling on activated vasculature and recruitment during inflammation. Mediates Th17 cells, but not Th1 cells, adhesion to E-selectin. Acts as a T-cell counter-receptor for SIGLEC1 (By similarity).

#### Cellular Location

Membrane; Single-pass type I membrane protein. Cell projection, microvillus {ECO:0000250|UniProtKB:P13838}. Cell projection, uropodium {ECO:0000250|UniProtKB:P15702}. Note=Localizes to the uropodium and microvilli via its interaction with ERM proteins (EZR, RDX and MSN) {ECO:0000250|UniProtKB:P13838, ECO:0000250|UniProtKB:P15702}

#### Tissue Location

Cell surface of thymocytes, T-lymphocytes, neutrophils, plasma cells and myelomas

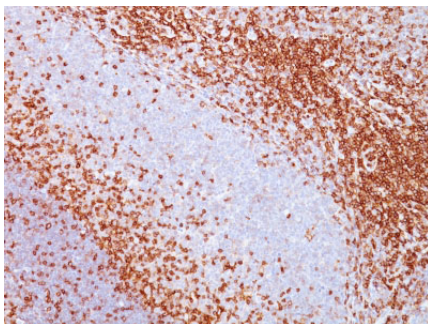
## Background

It recognizes a cell surface glycoprotein of 95/115/135kDa (depending upon the extent of glycosylation), identified as CD43. 70-90% of T-cell lymphomas and from 22-37% of B-cell lymphomas express CD43. No reactivity has been observed with reactive B-cells. So a B-lineage population that co-expresses CD43 is highly likely to be a malignant lymphoma, especially a low-grade lymphoma, rather than a reactive B-cell population. When CD43 antibody is used in combination with anti-CD20, effective immunophenotyping of the lymphomas in formalin-fixed tissues can be obtained. Co-staining of a lymphoid infiltrate with anti-CD20 and anti-CD43 argues against a reactive process and favors a diagnosis of lymphoma.

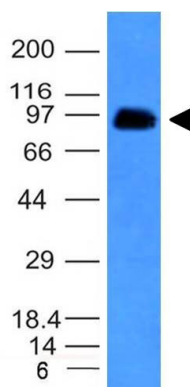
## References

Baekstrom, D., et al. 1995. Expression of the leukocyte-associated sialo-glycoprotein CD43 by a colon carcinoma cell line. J. Biol. Chem. 270: 13688-13692

## Images



Formalin-fixed, paraffin-embedded human Spleen stained with CD43 Monoclonal Antibody (SPN/839).



Western Blot Analysis of human Spleen Lysate using CD43 Monoclonal Antibody (SPN/839).

Please note: All products are 'FOR RESEARCH USE ONLY. NOT FOR USE IN DIAGNOSTIC OR THERAPEUTIC PROCEDURES'.