

# TGF-alpha (Transforming Growth Factor alpha) Antibody - With BSA and Azide

Mouse Monoclonal Antibody [Clone TGFA/1119 ]

Catalog # AH12403

## Product Information

---

<b>Application</b>	IF, FC, IHC-P
<b>Primary Accession</b>	<a href="#">P01135</a>
<b>Other Accession</b>	<a href="#">7039</a> , <a href="#">170009</a>
<b>Reactivity</b>	Human
<b>Host</b>	Mouse
<b>Clonality</b>	Monoclonal
<b>Isotype</b>	Mouse / IgG1, kappa
<b>Clone Names</b>	TGFA/1119
<b>Calculated MW</b>	17006

## Additional Information

---

<b>Gene ID</b>	7039
<b>Other Names</b>	Protransforming growth factor alpha, Transforming growth factor alpha, TGF-alpha, EGF-like TGF, ETGF, TGF type 1, TGFA
<b>Application Note</b>	IF~~1:50~200 FC~~1:10~50 IHC-P~~N/A
<b>Storage</b>	Store at 2 to 8°C.Antibody is stable for 24 months.
<b>Precautions</b>	TGF-alpha (Transforming Growth Factor alpha) Antibody - With BSA and Azide is for research use only and not for use in diagnostic or therapeutic procedures.

## Protein Information

---

<b>Name</b>	TGFA
<b>Function</b>	TGF alpha is a mitogenic polypeptide that is able to bind to the EGF receptor/EGFR and to act synergistically with TGF beta to promote anchorage-independent cell proliferation in soft agar.
<b>Cellular Location</b>	[Transforming growth factor alpha]: Secreted, extracellular space
<b>Tissue Location</b>	Isoform 1, isoform 3 and isoform 4 are expressed in keratinocytes and tumor-derived cell lines

## Background

---

This antibody reacts with the C-terminus of TGF alpha and shows no cross-reaction with EGF and the neuropeptide synenkephalin. TGF  $\alpha$  (aa50) is a growth factor with 33% homology to EGF, binds to EGFR, activates tyrosine phosphorylation of the receptor, and stimulates cell proliferation. It plays a role in tumor initiation by inducing the reversible transformed phenotype.

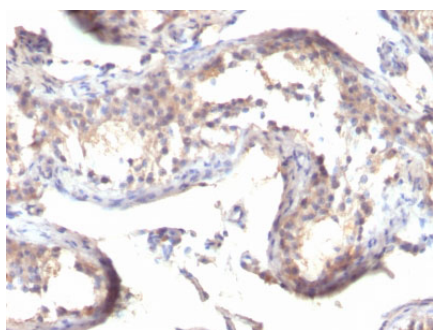
## References

---

Bebok Z; Markus B; Nemeth P. Prognostic relevance of transforming growth factor alpha (TGF-alpha) and tumor necrosis factor alpha (TNF-alpha) detected in breast cancer tissues by immunohistochemistry. *Breast Cancer Research and Treatment*, 1994, 29(3):229-35

## Images

---



Formalin-fixed, paraffin-embedded human Testicular Carcinoma stained with TGF alpha Monoclonal Antibody (TGFA/1119)

Please note: All products are 'FOR RESEARCH USE ONLY. NOT FOR USE IN DIAGNOSTIC OR THERAPEUTIC PROCEDURES'.