

# Proximal Nephrogenic Antigen (Renal Cell Marker) Antibody - With BSA and Azide

Mouse Monoclonal Antibody [Clone PN-15 ]

Catalog # AH12554

## Product Information

---

<b>Application</b>	WB, IHC, IF, FC
<b>Primary Accession</b>	<a href="#">Q16790</a>
<b>Other Accession</b>	<a href="#">768</a> , <a href="#">63287</a>
<b>Reactivity</b>	Human, Horse
<b>Host</b>	Mouse
<b>Clonality</b>	Monoclonal
<b>Isotype</b>	Mouse / IgG2b, kappa
<b>Clone Names</b>	PN-15
<b>Calculated MW</b>	49698

## Additional Information

---

<b>Gene ID</b>	768
<b>Other Names</b>	Carbonic anhydrase 9, 4.2.1.1, Carbonate dehydratase IX, Carbonic anhydrase IX, CA-IX, CAIX, Membrane antigen MN, P54/58N, Renal cell carcinoma-associated antigen G250, RCC-associated antigen G250, pMW1, CA9, G250, MN
<b>Application Note</b>	WB~~1:1000 IHC~~1:100~500 IF~~1:50~200 FC~~1:10~50
<b>Storage</b>	Store at 2 to 8°C.Antibody is stable for 24 months.
<b>Precautions</b>	Proximal Nephrogenic Antigen (Renal Cell Marker) Antibody - With BSA and Azide is for research use only and not for use in diagnostic or therapeutic procedures.

## Protein Information

---

<b>Name</b>	CA9
<b>Synonyms</b>	G250, MN
<b>Function</b>	Catalyzes the interconversion between carbon dioxide and water and the dissociated ions of carbonic acid (i.e. bicarbonate and hydrogen ions).
<b>Cellular Location</b>	Nucleus. Nucleus, nucleolus. Cell membrane; Single-pass type I membrane protein. Cell projection, microvillus membrane; Single-pass type I membrane protein. Note=Found on the surface microvilli and in the nucleus, particularly in nucleolus

**Tissue Location**

Expressed primarily in carcinoma cells lines. Expression is restricted to very few normal tissues and the most abundant expression is found in the epithelial cells of gastric mucosa

**Background**

---

Recognizes a glycoprotein of ~200kDa, identified as carbonic anhydrase IX (CAIX/gp200). Its epitope resides in the carbohydrate domain of gp200. It shows no significant cross-reactivity with other carbohydrate determinants, such as the Lewis blood group antigens, epithelial membrane antigen, HMFG, and AB blood group antigens. In normal kidney, gp200 is localized along the brush border of the pars convoluta and pars recta segments of the proximal tubule, as well as focally along the luminal surface of Bowman's capsule adjoining the outgoing proximal tubule. Reportedly, gp200 is expressed by 93% of primary and 84% of metastatic renal cell carcinomas. This MAb may be useful in the investigations of carcinomas of proximal nephrogenic differentiation especially those showing tubular differentiation.

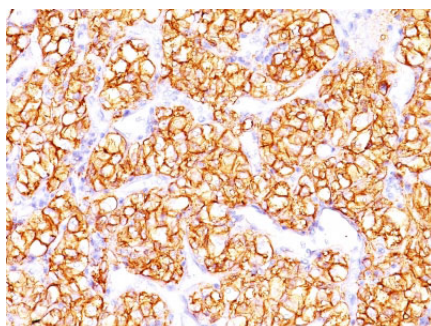
**References**

---

Yoshida SO, et. al. Cancer Research, 1989, 49(7):1802-9

**Images**

---



Formalin-fixed, paraffin-embedded human Renal Cell Carcinoma stained with PNA Monoclonal Antibody (PN-15).

Please note: All products are 'FOR RESEARCH USE ONLY. NOT FOR USE IN DIAGNOSTIC OR THERAPEUTIC PROCEDURES'.