

CD30 / TNFRSF8 (Hodgkin & Reed-Sternberg Cell Marker) Antibody - Culture Supernatant

Mouse Monoclonal Antibody [Clone Ber-H2 + CD30/412]

Catalog # AH12697

Product Information

Application	IHC, IF, FC
Primary Accession	P28908
Other Accession	943 , 1314
Reactivity	Human
Host	Mouse
Clonality	Monoclonal
Isotype	Mouse / IgG's
Clone Names	Ber-H2 + CD30/412
Calculated MW	63747

Additional Information

Gene ID	943
Other Names	Tumor necrosis factor receptor superfamily member 8, CD30L receptor, Ki-1 antigen, Lymphocyte activation antigen CD30, CD30, TNFRSF8, CD30, D1S166E
Application Note	IHC~~1:100~500 IF~~1:50~200 FC~~1:10~50
Storage	Store at 2 to 8°C.Antibody is stable for 24 months.
Precautions	CD30 / TNFRSF8 (Hodgkin & Reed-Sternberg Cell Marker) Antibody - Culture Supernatant is for research use only and not for use in diagnostic or therapeutic procedures.

Protein Information

Name	TNFRSF8 (HGNC:11923)
Function	Receptor for TNFSF8/CD30L (PubMed: 8391931). May play a role in the regulation of cellular growth and transformation of activated lymphoblasts. Regulates gene expression through activation of NF-kappa- B (PubMed: 8999898).
Cellular Location	[Isoform 1]: Cell membrane; Single-pass type I membrane protein
Tissue Location	[Isoform 2]: Detected in alveolar macrophages (at protein level).

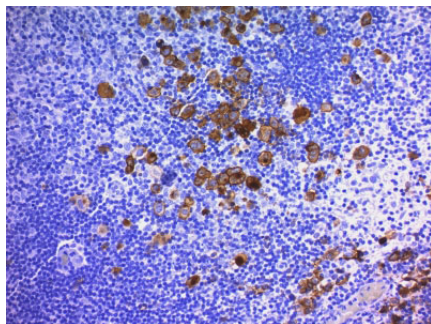
Background

Recognizes a single chain glycoprotein of 105/120kDa, identified as CD30/Ki-1. CD30 is synthesized as a 90kDa precursor, which is processed in the Golgi complex into a membrane-bound phosphorylated mature 105/120kDa glycoprotein. In Hodgkin's disease, CD30/Ki-1 antigen is expressed by mononuclear-Hodgkin and multinucleated Reed-Sternberg cells. It is also expressed by the tumor cells of a majority of anaplastic large cell lymphomas as well as by a varying proportion of activated T and B cells. This MAb distinguishes large cell lymphomas derived from activated lymphoid cells from histiocytic malignancies and lymphomas derived from resting and precursor lymphoid cells or from anaplastic carcinomas. About one third of the Ki-1 positive lymphomas lack the leukocyte common antigen (CD45).

References

Schwartz R, Gerdes J, Dörkop H, Falini B, Pileri S, Stein H. Ber-H2: A new anti-Ki-1 (CD30) monoclonal antibody directed at a formol-resistant epitope. *Blood* 1989;74:1678-89

Images



Formalin-fixed, paraffin-embedded human Hodgkin's Lymphoma stained with CD30 Monoclonal Antibody (Ber-H2 + CD30/412).

Please note: All products are 'FOR RESEARCH USE ONLY. NOT FOR USE IN DIAGNOSTIC OR THERAPEUTIC PROCEDURES'.