

# CD59 / Complement Regulatory Protein / Protectin Antibody - With BSA and Azide

Mouse Monoclonal Antibody [Clone MACIF/629 ]

Catalog # AH12769

## Product Information

Application	IHC, IF, FC
Primary Accession	<a href="#">P13987</a>
Other Accession	<a href="#">966</a> , <a href="#">278573</a> , <a href="#">709466</a> , <a href="#">710641</a>
Reactivity	Human
Host	Mouse
Clonality	Monoclonal
Isotype	Mouse / IgG1, kappa
Clone Names	MACIF/629
Calculated MW	14177

## Additional Information

Gene ID	966
Other Names	CD59 glycoprotein, 1F5 antigen, 20 kDa homologous restriction factor, HRF-20, HRF20, MAC-inhibitory protein, MAC-IP, MEM43 antigen, Membrane attack complex inhibition factor, MACIF, Membrane inhibitor of reactive lysis, MIRL, Protectin, CD59, CD59, MIC11, MIN1, MIN2, MIN3, MSK21
Application Note	IHC~~1:100~500 IF~~1:50~200 FC~~1:10~50
Storage	Store at 2 to 8°C.Antibody is stable for 24 months.
Precautions	CD59 / Complement Regulatory Protein / Protectin Antibody - With BSA and Azide is for research use only and not for use in diagnostic or therapeutic procedures.

## Protein Information

Name	CD59 {ECO:0000303 PubMed:2475570, ECO:0000312 HGNC:HGNC:1689}
Function	Potent inhibitor of the complement membrane attack complex (MAC) action, which protects human cells from damage during complement activation (PubMed: <a href="#">11882685</a> , PubMed: <a href="#">1698710</a> , PubMed: <a href="#">2475111</a> , PubMed: <a href="#">2475570</a> , PubMed: <a href="#">2606909</a> , PubMed: <a href="#">9053451</a> ). Acts by binding to the beta-haipins of C8 (C8A and C8B) components of the assembling MAC, forming an intermolecular beta-sheet that prevents incorporation of the multiple copies of C9 required for complete formation of the osmolytic pore (PubMed: <a href="#">11882685</a> , PubMed: <a href="#">1698710</a> , PubMed: <a href="#">36797260</a> ).

## Cellular Location

Cell membrane; Lipid-anchor, GPI-anchor. Secreted. Note=Localizes to the cell surface (PubMed:36797260). Soluble form found in a number of tissues (PubMed:8670172).

## Background

---

Reacts with human CD59, a 20kDa glycosyl phosphatidyl-inositol (GPI)-anchored cell surface protein. CD59 regulates complement-mediated cell lysis, and it is involved in lymphocyte signal transduction. This protein is a potent inhibitor of the complement membrane attack complex, whereby it binds complement C8 and/or C9 during the assembly of this complex, thereby inhibiting the incorporation of multiple copies of C9 into the complex, which is necessary for osmolytic pore formation. It inhibits formation of MAC, thus protecting cells from complement-mediated lysis. Genetic defects in GPI-anchor attachment, that cause a reduction or loss of CD59 and CD55 on erythrocytes produce the symptoms of the disease paroxysmal hemoglobinuria (PNH). This MAb is useful for study on GPI-anchored proteins, PNH and CD59 functions. CD59 is widely distributed on cells in all tissues. The expression of CD59 on erythrocytes is important for their survival.

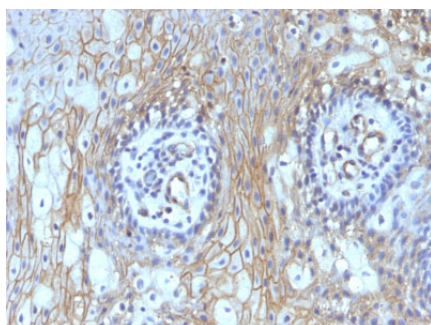
## References

---

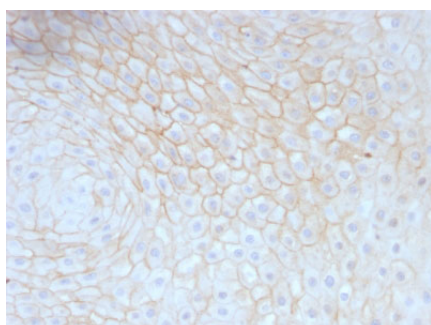
A E Fritzinger, F. Marciano-Cabral, et al. (2006) *Infection and Immunity* 74(2):1189-1195. | J Zhang, C Gerhardinger, M Lorenzi (2002) *Diabetes* 51(12): 3499-3504 |

## Images

---



Formalin-fixed, paraffin-embedded human Tongue stained with CD59 Monoclonal Antibody (MACIF/629)



Formalin-fixed, paraffin-embedded human Tonsil stained with CD59 Monoclonal Antibody (MACIF/629)

Please note: All products are 'FOR RESEARCH USE ONLY. NOT FOR USE IN DIAGNOSTIC OR THERAPEUTIC PROCEDURES'.