

CD68 (Macrophage Marker) Antibody - With BSA and Azide

Mouse Monoclonal Antibody [Clone LAMP4/824]

Catalog # AH12795

Product Information

Application	IHC, IF, FC
Primary Accession	P34810
Other Accession	968 , 647419
Reactivity	Human
Host	Mouse
Clonality	Monoclonal
Isotype	Mouse / IgG1, kappa
Clone Names	LAMP4/824
Calculated MW	37408

Additional Information

Gene ID	968
Other Names	Macrosialin, Gp110, CD68, CD68
Application Note	IHC~~1:100~500 IF~~1:50~200 FC~~1:10~50
Storage	Store at 2 to 8°C.Antibody is stable for 24 months.
Precautions	CD68 (Macrophage Marker) Antibody - With BSA and Azide is for research use only and not for use in diagnostic or therapeutic procedures.

Protein Information

Name	CD68
Function	Could play a role in phagocytic activities of tissue macrophages, both in intracellular lysosomal metabolism and extracellular cell-cell and cell-pathogen interactions. Binds to tissue- and organ-specific lectins or selectins, allowing homing of macrophage subsets to particular sites. Rapid recirculation of CD68 from endosomes and lysosomes to the plasma membrane may allow macrophages to crawl over selectin-bearing substrates or other cells.
Cellular Location	[Isoform Short]: Cell membrane; Single-pass type I membrane protein
Tissue Location	Highly expressed by blood monocytes and tissue macrophages. Also expressed in lymphocytes, fibroblasts and endothelial cells. Expressed in many tumor cell lines which could allow them to attach to selectins on

vascular endothelium, facilitating their dissemination to secondary sites.

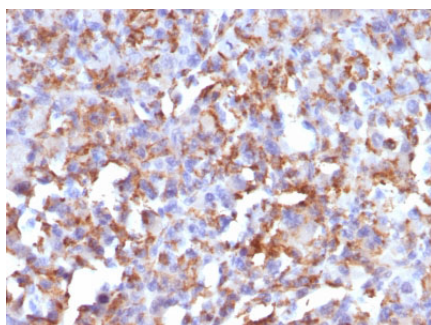
Background

This antibody recognizes a glycoprotein of 110kDa, which is identified as CD68. It is important for identifying macrophages in tissue sections. It stains macrophages in a wide variety of human tissues, including Kupffer cells and macrophages in the red pulp of the spleen, in lamina propria of the gut, in lung alveoli, and in bone marrow. It reacts with myeloid precursors and peripheral blood granulocytes. It also reacts with plasmacytoid T cells, which are supposed to be of monocyte/macrophage origin. It shows strong granular cytoplasmic staining of chronic and acute myeloid leukemia and also reacts with rare cases of true histiocytic neoplasia. Lymphomas are negative or show few granules.

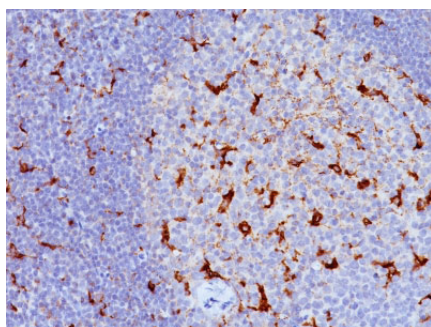
References

Holness, C.L. and Simmons, D.L. 1993. Molecular cloning of CD68, a human macrophage marker related to lysosomal glycoproteins. *Blood* 81: 1607-1613. |

Images



Formalin-fixed, paraffin-embedded human Histiocytoma stained with CD68 Monoclonal Antibody (LAMP4/824).



Formalin-fixed, paraffin-embedded human Tonsil stained with CD68 Monoclonal Antibody (LAMP4/824).

Please note: All products are 'FOR RESEARCH USE ONLY. NOT FOR USE IN DIAGNOSTIC OR THERAPEUTIC PROCEDURES'.