

Cytokeratin 5/8 Antibody - With BSA and Azide

Mouse Monoclonal Antibody [Clone SPM268]

Catalog # AH12917

Product Information

Application	WB, IF, FC, IHC-P
Primary Accession	P13647
Other Accession	3852 (CK5) , 3856 (CK8) , 433845 (CK5) , 533782 , 708445 (CK8) , P05787 (CK8)
Reactivity	Human, Mouse, Rat, Hamster, Pig, Bovine, Sheep, Dog
Host	Mouse
Clonality	Monoclonal
Isotype	Mouse / IgG1, kappa
Clone Names	SPM268
Calculated MW	62378

Additional Information

Gene ID	3852
Other Names	Keratin, type II cytoskeletal 5, 58 kDa cytokeratin, Cytokeratin-5, CK-5, Keratin-5, K5, Type-II keratin Kb5, KRT5
Application Note	WB~~1:1000 IF~~1:50~200 FC~~1:10~50 IHC-P~~N/A
Storage	Store at 2 to 8°C.Antibody is stable for 24 months.
Precautions	Cytokeratin 5/8 Antibody - With BSA and Azide is for research use only and not for use in diagnostic or therapeutic procedures.

Protein Information

Name	KRT5
Function	Required for the formation of keratin intermediate filaments in the basal epidermis and maintenance of the skin barrier in response to mechanical stress (By similarity). Regulates the recruitment of Langerhans cells to the epidermis, potentially by modulation of the abundance of macrophage chemotactic cytokines, macrophage inflammatory cytokines and CTNND1 localization in keratinocytes (By similarity).
Cellular Location	Cytoplasm.
Tissue Location	Expressed in corneal epithelium (at protein level) (PubMed:26758872). Expressed in keratinocytes (at protein level) (PubMed:20128788, PubMed:31302245).

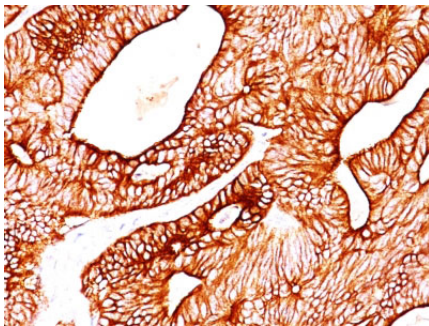
Background

It reacts with keratin 5 (58kDa) and keratin 8 (52.5kDa). Simple epithelia express cytokeratin 8 in combination with 18. On the other hand, basal cells of stratified epithelia express cytokeratin 5 paired with 14. This antibody therefore, reacts with a wide range of epithelia and their carcinomas.

References

Vojtšík et al. Folia Biol. 37(3-4): 197-206 (1991). | Bartkova et al. Neoplasma 38(4), 439-46 (1991). | Bartek et al. J. of Pathology 164, 215-24 (1991). | Kovařík et al. J. Tumor Marker Oncol. 5, 219 (1990). |

Images



Formalin-fixed, paraffin-embedded human Colon Carcinoma stained with Cytokeratin 5/8 Monoclonal Antibody (SPM268).

Please note: All products are 'FOR RESEARCH USE ONLY. NOT FOR USE IN DIAGNOSTIC OR THERAPEUTIC PROCEDURES'.