

# Anti-ETS1 / Antibody

Mouse Monoclonal Antibody

Catalog # AH13204

## Product Information

---

<b>Application</b>	WB, IHC-P, IF, FC
<b>Primary Accession</b>	<a href="#">P14921</a>
<b>Other Accession</b>	<a href="#">369438</a>
<b>Reactivity</b>	Human
<b>Host</b>	Mouse
<b>Clonality</b>	Monoclonal
<b>Isotype</b>	Mouse / IgG
<b>Clone Names</b>	ETS1/1282
<b>Calculated MW</b>	50408

## Additional Information

---

<b>Gene ID</b>	2113
<b>Other Names</b>	Avian erythroblastosis virus E26 (v ets) oncogene homolog 1; ETS1; EWSR2; p54; v-ets erythroblastosis virus E26 oncogene homolog 1
<b>Application Note</b>	Flow Cytometry (0.5-1ug/million cells in 0.1ml); Immunofluorescence (1-2ug/ml); ,Western Blotting (1-2ug/ml for 60 minutes at RT);,Immunohistology (Formalin-fixed) (1-2ug/ml for 30 minutes at RT),(Staining of formalin-fixed tissues requires boiling tissue sections in 10mM Tris with 1mM EDTA, pH 9.0, for 10-20 min followed by cooling at RT for 20 minutes) ,Optimal dilution for a specific application should be determined.
<b>Format</b>	200ug/ml of Ab purified from Bioreactor Concentrate by Protein A/G. Prepared in 10mM PBS with 0.05% BSA & 0.05% azide. Also available WITHOUT BSA & azide at 1.0mg/ml.
<b>Storage</b>	Store at 2 to 8°C.Antibody is stable for 24 months.
<b>Precautions</b>	Anti-ETS1 / Antibody is for research use only and not for use in diagnostic or therapeutic procedures.

## Protein Information

---

<b>Name</b>	ETS1
<b>Synonyms</b>	EWSR2
<b>Function</b>	Transcription factor (PubMed: <a href="#">10698492</a> , PubMed: <a href="#">11909962</a> ). Directly controls the expression of cytokine and chemokine genes in a wide variety of

different cellular contexts (PubMed:[20378371](#)). May control the differentiation, survival and proliferation of lymphoid cells (PubMed:[20378371](#)). May also regulate angiogenesis through regulation of expression of genes controlling endothelial cell migration and invasion (PubMed:[15247905](#), PubMed:[15592518](#)).

**Cellular Location**

Nucleus. Cytoplasm Note=Delocalizes from nucleus to cytoplasm when coexpressed with isoform Ets-1 p27.

**Tissue Location**

Highly expressed within lymphoid cells. Isoforms c- ETS-1A and Ets-1 p27 are both detected in all fetal tissues tested, but vary with tissue type in adult tissues. None is detected in brain or kidney.

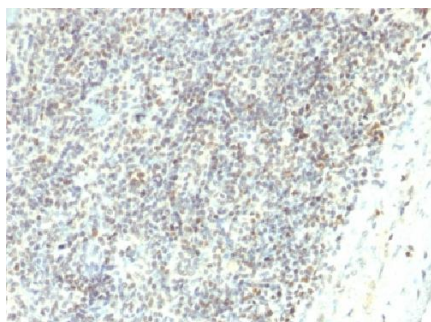
## Background

---

ETS1 proto-oncogene is an important transcription factor that plays a role in cell proliferation and differentiation. ETS1 is related to the growth of carcinoma cells by its regulation of the transcription of matrix metalloproteinases and urokinase-type plasminogen activator. The processes of tumor invasion and metastasis depend on the increased proteolytic activity of the invading tumor cells that may involve matrix metalloproteinases, cathepsins B and D and plasminogen activator in the metastatic cascade. ETS1 is preferentially expressed in lymphoid cells, where it is essential for the maintenance of the normal pool of resting T and B cells. ETS1 expression level and distribution are differentially controlled in resting, activated and apoptotic lymphocytes.

## Images

---



Formalin-fixed, paraffin-embedded human Spleen stained with ETS1 Monoclonal Antibody (ETS1/1282).

Please note: All products are 'FOR RESEARCH USE ONLY. NOT FOR USE IN DIAGNOSTIC OR THERAPEUTIC PROCEDURES'.