

Anti-CELA3B / ELA3B Antibody

Mouse Monoclonal Antibody

Catalog # AH13237

Product Information

Application	IHC-P, IF, FC, E
Primary Accession	P08861
Other Accession	728752
Reactivity	Human, Mouse, Rat
Host	Mouse
Clonality	Monoclonal
Isotype	Mouse / IgG1
Clone Names	CELA3B/1257
Calculated MW	29263

Additional Information

Gene ID	23436
Other Names	Chymotrypsin like elastase family member 3B (CELA3B); ELA3B; Elastase IIIB; Protease E
Application Note	ELISA (Use Ab at 2-4ug/ml for coating) (Order Ab without BSA),Flow Cytometry (0.5-1ug/million cells); Immunofluorescence (0.5-1ug/ml); ,Immunohistology (Formalin-fixed) (0.5-1ug/ml for 30 minutes at RT),(Staining of formalin-fixed tissues requires boiling tissue sections in 10mM Tris with 1mM EDTA, pH 9.0, for 10-20 min followed by cooling at RT for 20 minutes) ,Optimal dilution for a specific application should be determined.
Format	200ug/ml of Ab purified from Bioreactor Concentrate by Protein A/G. Prepared in 10mM PBS with 0.05% BSA & 0.05% azide. Also available WITHOUT BSA & azide at 1.0mg/ml.
Storage	Store at 2 to 8°C.Antibody is stable for 24 months.
Precautions	Anti-CELA3B / ELA3B Antibody is for research use only and not for use in diagnostic or therapeutic procedures.

Protein Information

Name	CELA3B
Synonyms	ELA3B
Function	Efficient protease with alanine specificity but only little elastolytic activity.

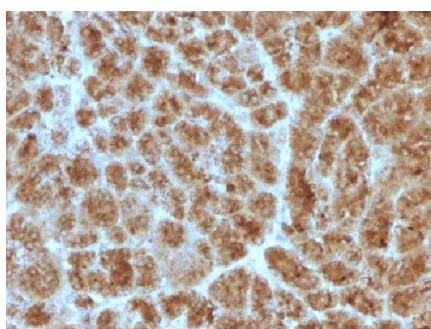
Tissue Location

Pancreas. Not detectable in keratinocytes.

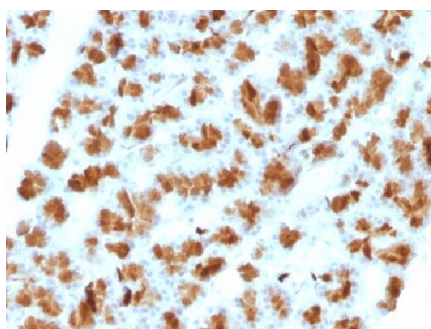
Background

This MAb recognizes a protein of ~30kDa, identified as CELA3B (Chymotrypsin like elastase family member 3B). Elastases form a subfamily of serine proteases that hydrolyze many proteins in addition to elastin. Humans have six elastase genes which encode the structurally similar proteins elastase 1, 2, 2A, 2B, 3A, and 3B. Unlike other elastases, elastase 3B has little elastolytic activity. Like most of the human elastases, elastase 3B is secreted from the pancreas as a zymogen and, like other serine proteases such as trypsin, chymotrypsin and kallikrein; it has a digestive function in the intestine. Elastase 3B preferentially cleaves proteins after alanine residues. Elastase 3B may also function in the intestinal transport and metabolism of cholesterol. Both elastase 3A and elastase 3B have been referred to as protease E and as elastase 1, and excretion of this protein in fecal material is frequently used as a measure of pancreatic function in clinical assays.

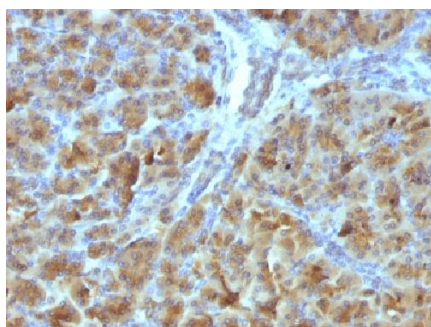
Images



Formalin-fixed, paraffin-embedded Human Pancreas stained with CELA3B Monoclonal Antibody (CELA3B/1257)



Formalin-fixed, paraffin-embedded Rat Pancreas stained with CELA3B Monoclonal Antibody (CELA3B/1257).



Formalin-fixed, paraffin-embedded Mouse Pancreas stained with CELA3B Monoclonal Antibody (CELA3B/1257).

Please note: All products are 'FOR RESEARCH USE ONLY. NOT FOR USE IN DIAGNOSTIC OR THERAPEUTIC PROCEDURES'.