

# Anti-Galectin-13 (GAL13) / Placental Protein 13 (PP13) Antibody

Mouse Monoclonal Antibody  
Catalog # AH13279

## Product Information

---

<b>Application</b>	IHC-P, IF, FC, E
<b>Primary Accession</b>	<a href="#">Q9UHV8</a>
<b>Other Accession</b>	<a href="#">23671</a>
<b>Reactivity</b>	Human
<b>Host</b>	Mouse
<b>Clonality</b>	Monoclonal
<b>Isotype</b>	Mouse / IgG2b
<b>Clone Names</b>	PP13/1162
<b>Calculated MW</b>	16119

## Additional Information

---

<b>Gene ID</b>	29124
<b>Other Names</b>	Gal-13; GAL13; Galactoside-binding soluble lectin 13; Galectin-13; Galectin13; Lectin galactoside binding soluble 13; LGALS13; PLAC8; Placental protein 13 (PP13); Placental tissue protein 13
<b>Application Note</b>	ELISA (For coating, order Ab without BSA);,Flow Cytometry (0.5-1ug/million cells); Immunofluorescence (0.5-1ug/ml);,Immunohistology (Formalin-fixed) (0.5-1ug/ml for 30 minutes at RT),(Staining of formalin-fixed tissues requires boiling tissue sections in 10mM Tris with 1mM EDTA, pH 9.0 or 10mM Citrate buffer, pH 6.0, for 10-20 min followed by cooling at RT for 20 minutes),Optimal dilution for a specific application should be determined.
<b>Format</b>	200ug/ml of Ab purified from Bioreactor Concentrate by Protein A/G. Prepared in 1mM PBS with 0.05% BSA & 0.05% azide. Also available WITHOUT BSA & azide at 1.0mg/ml.
<b>Storage</b>	Store at 2 to 8°C.Antibody is stable for 24 months.
<b>Precautions</b>	Anti-Galectin-13 (GAL13) / Placental Protein 13 (PP13) Antibody is for research use only and not for use in diagnostic or therapeutic procedures.

## Protein Information

---

<b>Name</b>	LGALS13
<b>Synonyms</b>	PLAC8

<b>Function</b>	Binds beta-galactoside and lactose. Strong inducer of T-cell apoptosis (PubMed: <a href="#">10527825</a> , PubMed: <a href="#">19497882</a> ). Has hemagglutinating activity towards chicken erythrocytes (PubMed: <a href="#">29343868</a> ).
<b>Cellular Location</b>	Cytoplasm. Nucleus matrix
<b>Tissue Location</b>	Detected in adult and fetal spleen, fetal kidney, adult urinary bladder and placenta. Placental expression originates predominantly from the syncytiotrophoblast

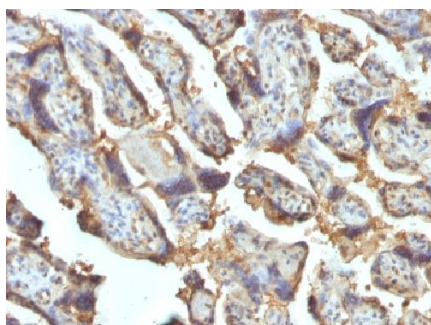
## Background

---

It recognizes a 32kDa protein, which is identified as homodimer of galectin-13 (also known as PP13). Galectins are a family of soluble  $\beta$ -galactoside-binding lectins that modulate cell-to-cell adhesion and cell-to-extracellular matrix (ECM) interactions and play a role in tumor progression, pre-mRNA splicing and apoptosis. One such member, galectin-13, is a 139 amino acid protein that contains one galectin domain. Possessing lysophospholipase activity, galectin-13 exists as a disulfide-linked homodimer. Galectin-13 is suggested to have a developmental role in the placenta and may display immunobiological activity in feto-maternal blood-spaces. Screening for galectin-13 in maternal serum during the first trimester of pregnancy may serve as a diagnostic marker to predict preterm pre-eclampsia.

## Images

---



Formalin-fixed, paraffin-embedded human Placenta stained with Galectin-13 / PP13 Monoclonal Antibody (PP13/1162).

Please note: All products are 'FOR RESEARCH USE ONLY. NOT FOR USE IN DIAGNOSTIC OR THERAPEUTIC PROCEDURES'.