

# Anti-Cytokeratin 15 (KRT15) (Basal Cell Marker) Antibody

Mouse Monoclonal Antibody

Catalog # AH13359

## Product Information

---

<b>Application</b>	WB, IHC-P, IHC-F, IF, FC
<b>Primary Accession</b>	<a href="#">P19012</a>
<b>Other Accession</b>	<a href="#">654570</a>
<b>Reactivity</b>	Human, Rat
<b>Host</b>	Mouse
<b>Clonality</b>	Monoclonal
<b>Isotype</b>	Mouse / IgG2a, kappa
<b>Clone Names</b>	KRT15/1699
<b>Calculated MW</b>	49212

## Additional Information

---

<b>Gene ID</b>	3866
<b>Other Names</b>	CK15; Cytokeratin 15; K1CO; Ka15; Keratin 15 basic; Keratin 15 beta; Keratin complex 1 acidic gene 15; Keratin type I cytoskeletal 15; KRT15; KRTB; KRTL15; Type I cytoskeletal 15; Type I keratin Ka15
<b>Application Note</b>	Flow Cytometry (0.5-1ug/million cells); Immunofluorescence (1-2ug/ml); ,Western Blotting (0.5-1ug/ml); ,Immunohistology (Frozen & formalin-fixed) (0.5-1.0ug/ml for 30 min at RT),(Staining of formalin-fixed tissues requires boiling tissue sections in 10mM Citrate Buffer, pH 6.0, for 10-20 min followed by cooling at RT for 20 minutes),Optimal dilution for a specific application should be determined.
<b>Format</b>	200ug/ml of Ab purified from Bioreactor Concentrate by Protein A/G. Prepared in 10mM PBS with 0.05% BSA & 0.05% azide. Also available WITHOUT BSA & azide at 1.0mg/ml.
<b>Storage</b>	Store at 2 to 8°C.Antibody is stable for 24 months.
<b>Precautions</b>	Anti-Cytokeratin 15 (KRT15) (Basal Cell Marker) Antibody is for research use only and not for use in diagnostic or therapeutic procedures.

## Protein Information

---

<b>Name</b>	KRT15
<b>Synonyms</b>	KRTB
<b>Tissue Location</b>	Expressed in a discontinuous manner in the basal cell layer of adult skin

epidermis, but continuously in the basal layer of fetal skin epidermis and nail. Also expressed in the outer root sheath above the hair bulb in hair follicle (at protein level) Expressed homogeneously in all cell layers of the esophagus and exocervix, but detected in the basal cell layer only of oral mucosa, skin and in the basal plus the next two layers of the suprabasal epithelium of the palate.

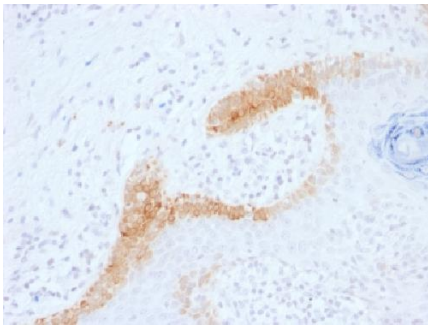
## Background

---

Keratins are a family of intermediate filament proteins that assemble into filaments through forming heterodimers of one type I keratin (keratins 9 to 23) and one type II keratin (keratins 1 to 8). Keratins demonstrate tissue and differentiation specific expression profiles. Keratin 15 is a type I keratin which is expressed only in basal keratinocytes in stratified epithelia and does not appear to have a natural type II expression partner. Keratin 15 is down regulated in activated keratinocytes. Cytokeratin 15 is a specific marker of stem cells of the hair-follicle bulge and may be a useful marker for diagnosis between basal cell carcinoma (BCC) and trichoepithelioma. Trichoblastoma are benign neoplasms of follicular differentiation frequently found in nevus sebaceous. Many morphologic features are shared with nodular basal cell carcinoma, sometimes rendering a diagnosis difficult. Trichoblastoma and BCC show variable expression of Cytokeratin 15 and Cytokeratin 19, and absence of hair keratins.

## Images

---



Formalin-fixed, paraffin-embedded human Basal Cell Carcinoma stained with Cytokeratin 15 Monoclonal Antibody (KRT15/1699).

Please note: All products are 'FOR RESEARCH USE ONLY. NOT FOR USE IN DIAGNOSTIC OR THERAPEUTIC PROCEDURES'.