

# Anti-Luteinizing Hormone / Choriogonadotropin Receptor (LHCGR) Antibody

Mouse Monoclonal Antibody

Catalog # AH13367

## Product Information

---

<b>Application</b>	IHC-P, IF, FC
<b>Primary Accession</b>	<a href="#">P22888</a>
<b>Other Accession</b>	<a href="#">468490</a>
<b>Reactivity</b>	Human
<b>Host</b>	Mouse
<b>Clonality</b>	Monoclonal
<b>Isotype</b>	Mouse / IgG1, kappa
<b>Clone Names</b>	LHCGR/1417
<b>Calculated MW</b>	78643

## Additional Information

---

<b>Gene ID</b>	3973
<b>Other Names</b>	Gonadotropin receptor; GTHR-II; HHG; LCGR; LGR2; LH-R; LH/CG-R; LH/CGR; LHCGR; LHR; LHRHR; LSH-R; Luteinizing hormone receptor; Luteinizing hormone/choriogonadotropin receptor; Lutropin choriogonadotropic receptor; Lutropin-choriogonadotropic hormone receptor; ULG5
<b>Application Note</b>	Flow Cytometry (0.5-1ug/million cells); Immunofluorescence (1-2ug/ml); ,Immunohistology (Formalin-fixed) (0.5-1ug/ml for 30 min at RT),(Staining of formalin-fixed tissues requires boiling tissue sections in 10mM Citrate Buffer, pH 6.0, for 10-20 min followed by cooling at RT for 20 minutes),Optimal dilution for a specific application should be determined.
<b>Format</b>	200ug/ml of Ab purified from Bioreactor Concentrate by Protein A/G. Prepared in 10mM PBS with 0.05% BSA & 0.05% azide. Also available WITHOUT BSA & azide at 1.0mg/ml.
<b>Storage</b>	Store at 2 to 8°C.Antibody is stable for 24 months.
<b>Precautions</b>	Anti-Luteinizing Hormone / Choriogonadotropin Receptor (LHCGR) Antibody is for research use only and not for use in diagnostic or therapeutic procedures.

## Protein Information

---

<b>Name</b>	LHCGR
<b>Synonyms</b>	LCGR, LGR2, LHRHR

<b>Function</b>	Receptor for luteinizing hormone (PubMed: <a href="#">11847099</a> ). The activity of this receptor is mediated by G proteins which activate adenylate cyclase (PubMed: <a href="#">11847099</a> ).
<b>Cellular Location</b>	Cell membrane; Multi-pass membrane protein
<b>Tissue Location</b>	Gonadal and thyroid cells.

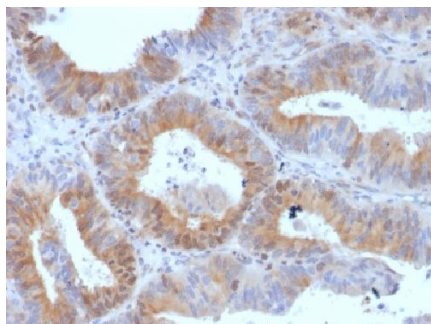
## Background

---

Recognizes a protein of 78-85kDa, which is identified as Luteinizing hormone / choriogonadotropin receptor. Luteinizing hormone plays a role in spermatogenesis and ovulation by stimulating the testes and ovaries to produce steroids. Choriogonadotropin production in the placenta maintains estrogen and progesterone levels during the first trimester of pregnancy. Ovaries and testes abundantly express luteinizing hormone / choriogonadotropin receptor (LHCGR) as a seven transmembrane, G protein-coupled receptor glycoprotein. LHCGR influences the protective effect of pregnancy and Gonadotropin against breast cancer. The expression of LHCGR on breast carcinoma correlates in part to the degree of tumor differentiation. LHCGR-positive breast tumors occur more frequently in tumors with greater cell differentiation in premenopausal women.

## Images

---



Formalin-fixed, paraffin-embedded Human Ovarian Carcinoma stained with LHCGR Monoclonal Antibody (LHCGR/1417).

Please note: All products are 'FOR RESEARCH USE ONLY. NOT FOR USE IN DIAGNOSTIC OR THERAPEUTIC PROCEDURES'.