

Anti-Ep-CAM / CD326 Antibody

Rabbit Polyclonal Antibody

Catalog # AH13385

Product Information

Application	WB, IHC-P, IF, FC
Primary Accession	P16422
Other Accession	542050
Reactivity	Human, Rat
Host	Rabbit
Clonality	Polyclonal
Isotype	Rabbit / IgG, kappa
Clone Names	N/A
Calculated MW	34932

Additional Information

Gene ID	4072
Other Names	Adenocarcinoma-associated Antigen; Cell Surface Glycoprotein Trop-1; EGP2; EGP314; EGP40; Epithelial Cell Adhesion Molecule; Epithelial Glycoprotein 314; ESA; KSA; TACD1; TACSTD1; TROP1; Tumor-associated Calcium Signal Transducer 1, ECS-1, Epidermal Surface Antigen 1, ESA1, FLOT2, Flotillin-2, M17S1 (Membrane Component, Chromosome 17, Surface Marker-1), REG-1, Reggie-1, Reggie-2
Application Note	Flow Cytometry (0.5-1ug/million cells); Immunofluorescence (1-2ug/ml); ,Western Blotting (0.5-1ug/ml); ,Immunohistology (Formalin-fixed) (1-2ug/ml for 30 min at RT),(Staining of formalin-fixed tissues requires boiling tissue sections in 10mM Citrate Buffer, pH 6.0, for 10-20 min followed by cooling at RT for 20 minutes),Optimal dilution for a specific application should be determined.
Format	200ug/ml of Ab purified by Protein A. Prepared in 10mM PBS with 0.05% BSA & 0.05% azide. Also available WITHOUT BSA & azide at 1.0mg/ml.
Storage	Store at 2 to 8°C.Antibody is stable for 24 months.
Precautions	Anti-Ep-CAM / CD326 Antibody is for research use only and not for use in diagnostic or therapeutic procedures.

Protein Information

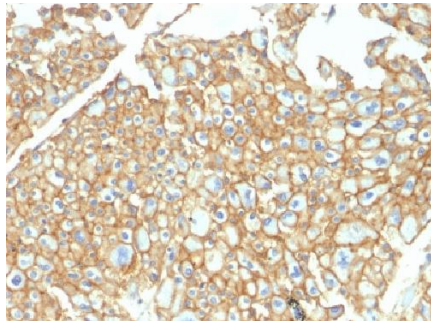
Name	EPCAM
Synonyms	GA733-2, M1S2, M4S1, MIC18, TACSTD1, TRO

Function	May act as a physical homophilic interaction molecule between intestinal epithelial cells (IECs) and intraepithelial lymphocytes (IELs) at the mucosal epithelium for providing immunological barrier as a first line of defense against mucosal infection. Plays a role in embryonic stem cells proliferation and differentiation. Up-regulates the expression of FABP5, MYC and cyclins A and E.
Cellular Location	Lateral cell membrane; Single-pass type I membrane protein. Cell junction, tight junction. Note=Colocalizes with CLDN7 at the lateral cell membrane and tight junction
Tissue Location	Highly and selectively expressed by undifferentiated rather than differentiated embryonic stem cells (ESC) Levels rapidly diminish as soon as ESC's differentiate (at protein levels). Expressed in almost all epithelial cell membranes but not on mesodermal or neural cell membranes. Found on the surface of adenocarcinoma.

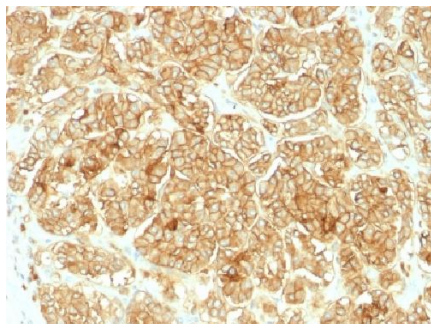
Background

EGP40 is a 40-43kDa transmembrane epithelial glycoprotein, also identified as epithelial specific antigen (ESA), or epithelial cellular adhesion molecule (Ep-CAM). It is expressed on baso-lateral cell surface in most simple epithelia and a vast majority of carcinomas with the exception of adult squamous epithelium, hepatocytes and gastric epithelial cells. Ep-CAM antibody has been used to distinguish adenocarcinoma from pleural mesothelioma and hepatocellular carcinoma. Ep-CAM antibody is also useful in distinguishing serous carcinomas of the ovary from mesothelioma.

Images



Formalin-fixed, paraffin-embedded human Renal Cell Carcinoma stained with Ep-CAM Rabbit Polyclonal Antibody.



Formalin-fixed, paraffin-embedded human Renal Cell Carcinoma stained with Ep-CAM Rabbit Polyclonal Antibody.

Please note: All products are 'FOR RESEARCH USE ONLY. NOT FOR USE IN DIAGNOSTIC OR THERAPEUTIC PROCEDURES'.