

# Anti-CD56 / NCAM1 / NKH1 (Neuronal Cell Marker) Antibody

Mouse Monoclonal Antibody  
Catalog # AH13409

## Product Information

---

Application	IHC-P
Primary Accession	<a href="#">P13591</a>
Other Accession	<a href="#">503878</a> , <a href="#">P13592</a>
Reactivity	Human
Host	Mouse
Clonality	Monoclonal
Isotype	Mouse / IgG2a, kappa
Clone Names	NCAM1/1496
Calculated MW	94574

## Additional Information

---

Gene ID	4684
Other Names	NCAM, Leu-19, NKH1, MSK39, NCAM120, NCAM140, NCAM180, Neural Cell Adhesion Molecule
Application Note	Immunohistology (Formalin-fixed) (0.5-1ug/ml for 30 minutes at RT),(Staining of formalin-fixed tissues requires boiling tissue sections in 10mM Citrate Buffer, pH 6.0, for 10-20 min followed by cooling at RT for 20 minutes),Optimal dilution for a specific application should be determined.
Format	200ug/ml of Ab purified from Bioreactor Concentrate by Protein A/G. Prepared in 10mM PBS with 0.05% BSA & 0.05% azide. Also available WITHOUT BSA & azide at 1.0mg/ml.
Storage	Store at 2 to 8°C.Antibody is stable for 24 months.
Precautions	Anti-CD56 / NCAM1 / NKH1 (Neuronal Cell Marker) Antibody is for research use only and not for use in diagnostic or therapeutic procedures.

## Protein Information

---

Name	NCAM1 ( <a href="#">HGNC:7656</a> )
Synonyms	NCAM
Function	This protein is a cell adhesion molecule involved in neuron- neuron adhesion, neurite fasciculation, outgrowth of neurites, etc. (Microbial infection) Acts as a receptor for Zika virus.

**Cellular Location**

[Isoform 1]: Cell membrane; Single-pass type I membrane protein [Isoform 3]: Cell membrane; Lipid-anchor, GPI- anchor [Isoform 5]: Secreted.

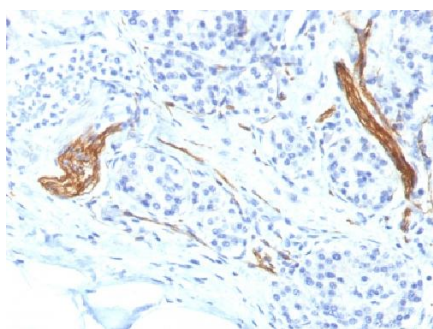
**Background**

---

This MAb reacts with an extracellular domain (close to transmembrane) of CD56/NCAM. Three isoforms of neural cell adhesion molecule (NCAM) are produced by differential splicing of the RNA transcript from a single gene. The 135kDa isoform is the basic molecule, which is glycosylated or sialylated to produce the mature species. Anti-CD56 recognizes two proteins of the neural cell adhesion molecule, the basic molecule expressed on most neuroectodermally derived tissues and neoplasms (e.g. retinoblastoma, medulloblastomas, astrocytomas, neuroblastomas, and small cell carcinomas). It is also expressed on some mesodermally derived tumors (rhabdomyosarcoma). Anti-CD56 plays an important role in the diagnosis of nodal and nasal NK/T-cell lymphomas.

**Images**

---



Formalin-fixed, paraffin-embedded human Pancreas stained with CD56 Monoclonal Antibody (NCAM1/1496)

Please note: All products are 'FOR RESEARCH USE ONLY. NOT FOR USE IN DIAGNOSTIC OR THERAPEUTIC PROCEDURES'.