

Anti-GCDFP-15 Antibody

Mouse Monoclonal Antibody

Catalog # AH13434

Product Information

Application	WB, IHC-P, IF, FC
Primary Accession	P12273
Other Accession	99949
Reactivity	Human
Host	Mouse
Clonality	Monoclonal
Isotype	Mouse / IgG2a, kappa
Clone Names	PIP/1571
Calculated MW	16572

Additional Information

Gene ID	5304
Other Names	BRST-2; GCDFP-15; gp17; GPIP4; Gross cystic disease fluid protein 15; Prolactin-induced protein (PIP); Prolactin-inducible protein (PIP); Secretory actin-binding protein (SABP)
Application Note	Flow Cytometry (0.5-1ug/million cells); ,Immunofluorescence (0.5-1ug/ml); ,Western Blotting (0.5-1ug/ml); ,Immunohistology (Formalin-fixed) (0.5-1ug/ml for 30 minutes at RT),(Staining of formalin-fixed tissues is enhanced by boiling tissue sections in 10mM Tris buffer with1mM EDTA, pH 9.0, for 10-20 min followed by cooling at RT for 20 minutes),Optimal dilution for a specific application should be determined.
Format	200ug/ml of Ab purified from Bioreactor Concentrate by Protein A/G. Prepared in 10mM PBS with 0.05% BSA & 0.05% azide. Also available WITHOUT BSA & azide at 1.0mg/ml.
Storage	Store at 2 to 8°C.Antibody is stable for 24 months.
Precautions	Anti-GCDFP-15 Antibody is for research use only and not for use in diagnostic or therapeutic procedures.

Protein Information

Name	PIP
Synonyms	GCDFP15, GPIP4
Cellular Location	Secreted.

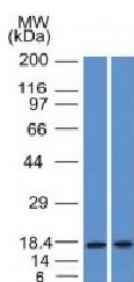
Tissue Location

Expressed in pathological conditions of the mammary gland and in several exocrine tissues, such as the lacrimal, salivary, and sweat glands

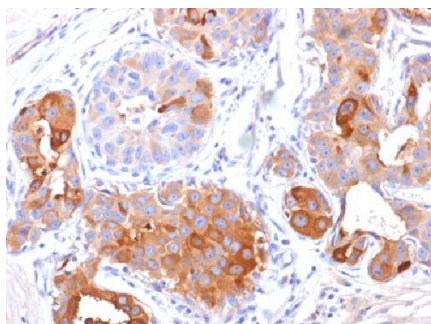
Background

It recognizes a protein of 15kDa, identified as Gross cystic disease fluid protein 15 (GCDFP-15). It is a major protein component of benign breast gross cysts. It is a known marker of breast cancer, as it is found in approximately 50% of all breast cancer specimens. GCDFP-15, also known as PIP, for prolactin inducible protein, is a prolactin and androgen controlled protein. This antibody is useful in the identification of metastatic breast carcinoma, or fluid analysis.

Images



Western Blot Analysis (A) Human Pancreas (B) HepG2 Cell lysate Using GCDFP-15 Monoclonal Antibody (PIP/1571).



Formalin-fixed, paraffin-embedded human Breast Carcinoma stained with GCDFP-15 Monoclonal Antibody (PIP/1571).

Please note: All products are 'FOR RESEARCH USE ONLY. NOT FOR USE IN DIAGNOSTIC OR THERAPEUTIC PROCEDURES'.