

Anti-TIMP2 (Tissue Inhibitor of Metalloproteinase 2) Antibody

Mouse Monoclonal Antibody

Catalog # AH13542

Product Information

Application	WB, IHC-P, IF, FC
Primary Accession	P16035
Other Accession	633514
Reactivity	Human, Mouse, Rat, Rabbit, Zebrafish, Bovine
Host	Mouse
Clonality	Monoclonal
Isotype	Mouse / IgG2a, kappa
Clone Names	SPM356
Calculated MW	24399

Additional Information

Gene ID	7077
Other Names	Metalloproteinase inhibitor 2; TIMP metalloproteinase inhibitor 2; TIMP-2; TIMP2; Tissue Inhibitor of Metalloproteinase 2
Application Note	Flow Cytometry (0.5-1ug/million cells); Immunofluorescence (0.5-1ug/ml); ,Western Blotting (0.5-1ug/ml); ,Immunohistology (Formalin-fixed) (1-2ug/ml for 30 minutes at RT),(Staining of formalin-fixed tissues requires boiling tissue sections in 10mM citrate buffer, pH 6.0, for 10-20 min followed by cooling at RT for 20 minutes),Optimal dilution for a specific application should be determined.
Format	200ug/ml of Ab purified from Bioreactor Concentrate by Protein A/G. Prepared in 10mM PBS with 0.05% BSA & 0.05% azide. Also available WITHOUT BSA & azide at 1.0mg/ml.
Storage	Store at 2 to 8°C.Antibody is stable for 24 months.
Precautions	Anti-TIMP2 (Tissue Inhibitor of Metalloproteinase 2) Antibody is for research use only and not for use in diagnostic or therapeutic procedures.

Protein Information

Name	TIMP2
Function	Complexes with metalloproteinases (such as collagenases) and irreversibly inactivates them by binding to their catalytic zinc cofactor. Known to act on MMP-1, MMP-2, MMP-3, MMP-7, MMP-8, MMP-9, MMP-10, MMP-13, MMP-14,

MMP-15, MMP-16 and MMP-19.

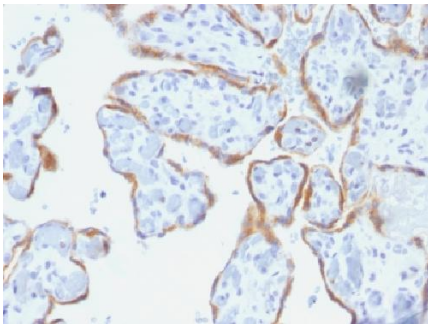
Cellular Location

Secreted.

Background

It recognizes a protein of 21kDa, identified as tissue inhibitor of metalloproteinases-2 (TIMP-2). It is closely related to TIMP-1 and shows the highest binding affinity to both the latent (pro) and active forms of 72kDa Type IV collagenase (also known as MMP-2 or gelatinase A). It also has affinity for the active form of 92kDa Type IV collagenase (also known as MMP-9 or gelatinase B). TIMP-2 inhibits the proteolytic invasiveness of tumor cells and normal placental trophoblast cells.

Images



Formalin-fixed, paraffin-embedded human Placenta stained with TIMP2 Monoclonal Antibody (SPM356).

Please note: All products are 'FOR RESEARCH USE ONLY. NOT FOR USE IN DIAGNOSTIC OR THERAPEUTIC PROCEDURES'.