

Anti-ASRGL1 (Asparaginase Like 1) Antibody

Mouse Monoclonal Antibody

Catalog # AH13588

Product Information

Application	WB, IHC-P, IF, FC
Primary Accession	Q7L266
Other Accession	535326
Reactivity	Human
Host	Mouse
Clonality	Monoclonal
Isotype	Mouse / IgG1
Clone Names	CRASH/1289
Calculated MW	32055

Additional Information

Gene ID	80150
Other Names	ALP1; ASGL1; Asparaginase like 1; ASRGL1; beta-aspartyl-peptidase; CRASH; isoaspartyl dipeptidase; isoaspartyl peptidase/L-asparaginase; L asparaginase; L asparagine amidohydrolase
Application Note	Flow Cytometry (0.5-1ug/million cells); Immunofluorescence (0.5-1ug/ml); ,Western Blotting (0.5-1ug/ml); ,Immunohistology (Formalin-fixed) (0.5-1.0ug/ml for 30 minutes at RT),(Staining of formalin-fixed tissues is enhanced by boiling tissue sections in 10mM Tris with 1mM EDTA, pH 9.0 for 10-20 min followed by cooling at RT for 20 minutes),Optimal dilution for a specific application should be determined.
Format	200ug/ml of Ab purified from Bioreactor Concentrate by Protein A/G. Prepared in 10mM PBS with 0.05% BSA & 0.05% azide. Also available WITHOUT BSA & azide at 1.0mg/ml.
Storage	Store at 2 to 8°C.Antibody is stable for 24 months.
Precautions	Anti-ASRGL1 (Asparaginase Like 1) Antibody is for research use only and not for use in diagnostic or therapeutic procedures.

Protein Information

Name	ASRGL1
Synonyms	ALP, CRASH
Function	Has both L-asparaginase and beta-aspartyl peptidase activity. May be

involved in the production of L-aspartate, which can act as an excitatory neurotransmitter in some brain regions. Is highly active with L-Asp beta-methyl ester. Besides, has catalytic activity toward beta-aspartyl dipeptides and their methyl esters, including beta-L-Asp- L-Phe, beta-L-Asp-L-Phe methyl ester (aspartame), beta-L-Asp-L-Ala, beta-L-Asp-L-Leu and beta-L-Asp-L-Lys. Does not have aspartylglucosaminidase activity and is inactive toward GlcNAc-L-Asn. Likewise, has no activity toward glutamine.

Cellular Location

Cytoplasm. Note=Midpiece of sperm tail

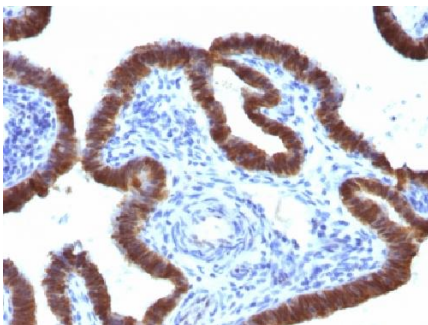
Tissue Location

Expressed in brain, kidney, testis and tissues of the gastrointestinal tract. Present in sperm (at protein level). Over- expressed in uterine, mammary, prostatic and ovarian carcinoma

Background

ASRGL1 (Asparaginase-like protein 1), also known as CRASH, is a 308 amino acid protein belonging to the Ntn-hydrolase family. Asparaginases utilize asparagine as a substrate to produce aspartic acid and ammonia. ASRGL1 has been identified as a autoantigenic protein that is present in the mid-piece of sperm after obstruction of the male reproductive tract. ASRGL1 is expressed highly in testis, but is also expressed in brain, kidney and gastrointestinal tissues. High levels of ASRGL1 have also been identified in ovarian, uterine and mammary tumors in comparison with normal tissues of the same origin.

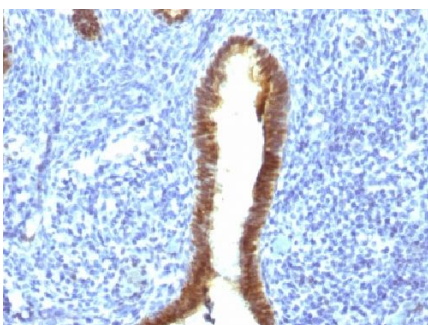
Images



Formalin-fixed, paraffin-embedded human Fallopian Tube stained with ASRGL1 Monoclonal Antibody (CRASH/1289).



Formalin-fixed, paraffin-embedded human Endometrium stained with ASRGL1 Monoclonal Antibody (CRASH/1289).



Formalin-fixed, paraffin-embedded human Uterus stained with ASRGL1 Monoclonal Antibody (CRASH/1289).

Please note: All products are 'FOR RESEARCH USE ONLY. NOT FOR USE IN DIAGNOSTIC OR THERAPEUTIC PROCEDURES'.